



IARE
INSTITUTE OF
AERONAUTICAL ENGINEERING



OUTCOME BASED EDUCATION (OBE)

PROCESS MANUAL (BT-23)

Mechanical Engineering



INSTITUTE OF AERONAUTICAL ENGINEERING

(Autonomous)

Dundigal - 500 043, Hyderabad, Telangana

Outcome Based Education (OBE) Manual (BT23)

For Admitted batch 2024

Table of contents

S.No	Description	Page Number
1	Vision, Mission, Quality Policy, Philosophy & Core Values	2
2	OBE Introduction	3
3	Planning and Development of Learning Outcomes Based Approach to Curriculum	5
4	Architecture of B.Tech Curriculum	8
5	Program Educational Objectives	10
6	Program Outcomes	11
7	Program Specific Outcomes	12
8	Relation between Program Educational Objectives and Program Outcomes as well as Program Specific Outcomes	13
9	Learning Domains - Bloom's taxonomy	15
10	Knowledge and Attitude Profile (WKs) and Indicators of Attainment	18
11	Engineering competence (EC) profiles	21
12	Guidelines for writing Course Outcome Statements	23
13	CO-PO/PSOs Course Articulation Matrix (CAM) Mapping	28
14	Indicators of Attainment for Assessing Program Outcomes	29
15	Adopting United Nation's Sustainable Development Goals (UNSDGs) to Engineering Program	37
16	Correlation Matrix of POs – ECs – WKs –UNSDGs	38
17	Method for measuring learning outcomes	40
18	CO - Assessment processes and tools	42
19	PO attainment using direct and indirect tools	43
20	PO and PSO attained through course modules	45
21	Course Outline Description (Appendix-A)	46

PREAMBLE

Outcome Based Education (OBE) is an educational model that forms the base of a quality education system. There is no single specified style of teaching or assessment in OBE. All educational activities carried out in OBE should help the students to achieve the set goals. The faculty may adapt the role of instructor, trainer, facilitator, and/or mentor, based on the outcomes targeted.

OBE enhances the traditional methods and focuses on what the Institute provides to students. It shows the success by making or demonstrating outcomes using statements "able to do" in favour of students. OBE provides clear standards for observable and measurable outcomes.

National Board of Accreditation (NBA) is an authorized body for the accreditation of Higher education institutions in India. NBA is also a full member of the Washington Accord. It accredits only the programs but not the institutions.

Higher Education Institutions are classified into two categories by NBA

Tier - 1: Institutions consist of all IITs, NITs, Central Universities, State Universities and Autonomous Institutions. Tier - 1 institutions can also claim the benefits as per the Washington Accord.

Tier - 2: Institutions consist of affiliated colleges of universities.

What is Outcome Based Education (OBE)?

Institutions adopting OBE try to bring changes to the curriculum by dynamically adapting to the requirements of the different stakeholders like Students, Parents, Industry Personnel and Recruiters. OBE is all about feedback and outcomes.

Four levels of outcomes from OBE are:

1. Program Educational Objectives (PEOs)
2. Program Outcomes (POs)
3. Program Specific Outcomes (PSOs)
4. Course Outcomes (COs)

Why OBE?

1. International recognition and global employment opportunities.
2. More employable and innovative graduates with professional and soft skills, social responsibility and ethics.
3. Better visibility and reputation of the technical institution among stakeholders.
4. Improving the commitment and involvement of all the stakeholders.
5. Enabling graduates to excel in their profession and accomplish greater heights in their careers.
6. Preparing graduates for the leadership positions and challenging them and making them aware of the opportunities in the technology development.

Benefits of OBE

- **Clarity:** The focus on outcome creates a clear expectation of what needs to be accomplished by the end of the course.
- **Flexibility:** With a clear sense of what needs to be accomplished, instructors will be able to structure their lessons around the students' needs.
- **Comparison:** OBE can be compared across the individual, class, batch, program and institute levels.
- **Involvement:** Students are expected to do their own learning. Increased student's involvement allows them to feel responsible for their own learning, and they should learn more through this individual learning.
 - Teaching will become a far more creative and innovative career
 - Faculty members will no longer feel the pressure of having to be the "source of all knowledge."

- Faculty members shape the thinking and vision of students towards a course.

India - OBE and Accreditation:

From 13 June 2014, India has become the permanent signatory member of the Washington Accord. Implementation of OBE in higher technical education also started in India. The National Assessment and Accreditation Council (NAAC) and National Board of Accreditation (NBA) are the autonomous bodies for promoting global quality standards for technical education in India. NBA has started accrediting only the programs running with OBE from 2013.

The National Board of Accreditation mandates establishing a culture of outcome-based education in institutions that offer Engineering, Pharmacy, Management program. Reports of outcome analysis help to find gaps and carryout continuous improvements in the education system of an Institute, which is very essential.

1. VISION, MISSION, QUALITY POLICY, PHILOSOPHY AND CORE VALUES

Institute Vision

To bring forth students, professionally competent and socially progressive, capable of working across cultures meeting the global standards ethically.

Institute Mission

To provide students with an extensive and exceptional education that prepares them to excel in their profession, guided by dynamic intellectual community and be able to face the technically complex world with creative leadership qualities.

Further, be instrumental in emanating new knowledge through innovative research that emboldens entrepreneurship and economic development for the benefit of wide spread community.

Department Vision

The Department of Mechanical Engineering envisions value-based education, research and development in the areas of Manufacturing and Computer Aided Engineering as an advanced center for Mechanical Engineering, producing graduates of world-class competence to face the challenges of global market with confidence, creating effective interface with various organizations.

Department Mission

The mission of the Mechanical Engineering Department is to prepare effective and responsible engineers for global requirements by providing quality education and to improve pedagogical methods employed in delivering the academic programs to the needs of the industry and changing world by conducting basic and applied research and to generate intellectual property.

- Prepare effective and responsible engineers for global requirements by providing quality education (**M1**).
- Improve pedagogical methods employed in delivering academic program to the needs of the industry, prepare for higher education and building entrepreneurship (**M2**).
- Conduct basic and applied research to generate intellectual property and adapt to professional standards (**M3**).

Quality Policy

Our policy is to nurture and build diligent and dedicated community of engineers providing a professional and unprejudiced environment, thus justifying the purpose of teaching and satisfying the stake holders.

A team of well qualified and experienced professionals ensure quality education with its practical application in all areas of the Institute.

Philosophy

The essence of learning lies in pursuing the truth that liberates one from the darkness of ignorance and

IARE firmly believes that education is for liberation.

Contained therein is the notion that engineering education includes all fields of science that plays a pivotal role in the development of world-wide community contributing to the progress of civilization.

This institute, adhering to the above understanding, is committed to the development of science and technology in congruence with the natural environs. It lays great emphasis on intensive research and education that blends professional skills and high moral standards with a sense of individuality and humanity. We thus promote ties with local communities and encourage transnational interactions in order to be socially accountable. This accelerates the process of transfiguring the students into complete human beings making the learning process relevant to life, instilling in them a sense of courtesy and responsibility.

Core Values

- **Excellence:** All activities are conducted according to the highest international standards.
- **Integrity:** Adheres to the principles of honesty, trustworthiness, reliability, transparency and accountability.
- **Inclusiveness:** To show respect for ethics, cultural and religious diversity and freedom of thought.
- **Social Responsibility:** Promotes community engagement, environmental sustainability, and global citizenship. It also promotes awareness of, and support for, the needs and challenges of the local and global communities.
- **Innovation:** Supports creative activities that approach challenges and issues from multiple perspectives in order to find solutions and advance knowledge.

2. OUTCOME BASED EDUCATION

Outcome-based education emphasizes clearly defined, high-quality demonstrations of meaningful learning outcomes in authentic contexts. This approach organizes the educational system to ensure that all students develop the critical knowledge, skills, and competencies needed for success by the end of their learning journey.

This means starting with a clear picture of what is important for students to be able to do, then organising the curriculum, instruction, and assessment to make sure this learning ultimately happens to all students.

The curriculum structure and features of the programs offered at IARE are developed in accordance with the principles of Outcome Based Education (OBE) and accredited by the National Board of Accreditation (NBA), India is one of the signatory members of the Washington Accord, an international agreement that recognizes engineering degrees from other member countries that are signatories to the Accord.

Employability statement: This curriculum embeds the development of employability skills throughout the course and is designed to equip students with the ability to relate the knowledge and skills that they have learnt to real world contexts in which they work or may work in the future. The use of expert guest lecturers from industry is the important assets for students attending the program.

What does OBE address?

OBE addresses the following **key questions:**

WHAT do we want the students to be able to do?	Have knowledge, practical engineering skills (Lab-Fab-App) and be able to solve problems.
HOW can we help students best to achieve it?	Student centric learning.
HOW will we know whether the students have achieved it?	Through various assessment schemes.
HOW Do we close the loop for further improvement? (Continuous Quality Improvement)?	Plan – Do – Check – Act.

2.1 OBE Implementation

Outcome-Based Education (OBE) is a student-centric learning model that helps teachers to plan the course delivery and assessment. It is implemented as per the following steps:

- Define Vision statements, Mission statements for the Institute and department
- Define Program Educational Objectives
- Program Outcomes and Program Specific Outcomes Statements
- Role of Knowledge and Attitude Profiles (WKs)
- Engineering Competencies (EC): Role of Engineering competencies for Complex engineering problems solving and complex engineering activities
 - Define Course Outcomes
 - Map courses with Program Outcomes
 - Define Course Outcomes with Bloom's Taxonomy for each course
 - Map topics with Course Outcomes
 - Prepare lecture-wise Course Lesson Plan – Schedule of instruction
 - Define pedagogical tools for course outcomes delivery
- Define Self Learning and Term Work activities like complex engineering problems, tutorial, practical, seminar, Mini Project, Assignments, Seminars, Course Projects, Industrial Visits, Case Studies, Digital Certifications, etc.,
- Use **Aakansha** Learning Management Portal for course full stack
- Use of **Effective Students Learning Outcomes (ESLO)** tool to measure the attainment of each Course Outcomes and POs /PSOs
- Track students' performance
- Identify Gaps in the Curriculum and adopt suitable measures to bridge the Gap
- Compare PO/PSO for last 3 academic years and propose remedial actions
- Assess the attainment of Program Educational Objective.

2.2 OBE Outcomes and Profiles

The list of outcome-based education outcomes and profiles are as follows:

- Program Educational Objectives (PEO)
- Program Outcomes (PO)
- Program Specific Outcomes (PSO)
- Knowledge and Attitude Profiles (WK)
- Engineering Competencies (EC): Range of Complex Engineering Problems (CP) and Complex Engineering Activities (CA)
- Learning Domains (LD)
- Sustainable Development Goals (SDGs)

PEO and PSO have been established through a rigorous process involving key stakeholders (which include faculty, industries, students, and parents). The process was initiated in 2024 through a series of workshops and assessments.

The lists of WKs are obtained from the recent document published by NBA (August, 2024). The list of LDs is based on the three categories of cognitive, affective and psychomotor domains based on the revised Bloom's Taxonomy.

3. PLANNING AND DEVELOPMENT OF LEARNING OUTCOMES BASED APPROACH TO CURRICULUM

The basic objective of the learning outcome-based approach to curriculum planning and development is to focus on demonstrated achievement of outcomes (expressed in terms of knowledge, understanding, skills, attitudes and values) and academic standards expected of a program of study. Learning outcomes specify what graduates completing a particular program of study are expected to know, understand and be able to do at the end of their program of study.

The expected learning outcomes are used to set the benchmark to formulate the course outcomes, program specific outcomes, program outcomes and engineering competencies. These outcomes are essential for curriculum planning and development, and in the design, delivery and review of academic programs. They provide general direction and guidance to the teaching-learning process and assessment of student learning levels under a specific program.

The overall objectives of the learning outcomes-based curriculum framework are to:

- Attain program outcomes, program specific outcomes and course outcomes that are expected to be demonstrated by the holder of a qualification.
- Enable prospective students, parents, employers and others to understand the nature and level of learning outcomes (knowledge, skills, attitudes and values) or attributes a graduate of a program should be capable of demonstrating on successful completion of the program of study.
- Maintain national standards and international comparability of learning outcomes and academic standards to ensure global competitiveness, and to facilitate student/graduate mobility.
- Provide higher education institutions an important point of reference for designing teaching-learning strategies, assessing student learning levels, and periodic review of programs and academic standards.

Two words “**knowledge and skill**” can describe a person’s competence! Both seem synonymous at first glance but given more thought, they depict different concepts.

Knowledge refers to learning concepts, principles and information regarding a particular subject(s) by a person through books, media, encyclopaedias, academic institutions and other sources. The following is the categorization of different levels of mastery: Assessment, Usage, and Familiarity. The **Assessment** encompasses both Usage and Familiarity, and **Usage** encompasses Familiarity

- **Familiarity:** The student understands what a concept is or what it means. This level of mastery concerns a basic awareness of a concept as opposed to expecting real facility with its application. It provides an answer to the question “What do you know about this?”
- **Usage:** The student is able to use or apply a concept in a concrete way. Using a concept may include, for example, appropriately using a specific concept in a program, using a particular proof technique, or performing a particular analysis. It provides an answer to the question “What do you know how to do?”
- **Assessment:** The student is able to consider a concept from multiple viewpoints and/or justify the selection of a particular approach to solve a problem. This level of mastery implies more than using a concept; it involves the ability to select an appropriate approach from understood alternatives. It provides an answer to the question “Why would you do that?”

Skill on the other hand refers to the ability of using that information and applying it in a context. Knowledge refers to theory and skill refers to successfully applying that theory in practice and getting expected results. The table 1, shows the details of Knowledge, Skill and Competence with their sub-strand in education.

Table 1: Details of Knowledge, Skill, Competence and Disposition with their sub - strand in education.

Strand	Sub-strand	Description
Knowledge	Breadth	How broad is the learner's knowledge?
	Type	What characteristics and quality of knowing has the learner engaged in?
Skill	Range	What is the breadth of the physical, intellectual, social and other skills acquired by the learner?
	Selectivity	How does the learner select the skills learned to address a range of problems? What is the nature of the complexity of the problems and how does the learner engage with them?
Dispositions	Application of knowledge-skill pairs.	Outline the “know-why” component of the skilled application of knowledge and capture the nuances brought about by the contextual application of knowledge-skill pairs. There is often a character and quality of application inherent in the domain and context of application.
Competence	Autonomy and responsibility	How does the learner demonstrate the taking of responsibility personally and in groups? How does the learner deploy skills acquired in managing interactions with others and working on their own?
	Self-development	To what extent can the learner operate in new environments, acquire new knowledge and skills; and assimilate these to their existing body of knowledge and skills?
	Role in Context	Can the learner apply/deploy their knowledge and skills in a range of relevant contexts?

Competency-based approach

A competency is the graduate’s ability to apply knowledge, skills, and dispositions (called attitudes) to effectively complete tasks.

This philosophy and definition acknowledge cognitive (Thinking, and learning.) and metacognitive skills (knowledge and understanding), demonstrated use of knowledge and applied skills, and interpersonal skills that often work in concert.

Hence competencies are the traits, behaviours, and abilities, the graduate must demonstrate to capably perform in a job, role, function, task, or duty. Job-relevant behaviours, motivations, and technical knowledge-skills are utilized together in the accomplishment of the task.

Benefits of Competency-based approach are

- Competencies focus on what the students need to learn, not what educators need to teach.
- Competencies effectively communicate expectations of graduates to external stakeholders.
- Competencies encourage reflection on student learning.
- Competencies can be used globally in diverse contexts.
- Competencies fit well with most accrediting agencies that use an outcome-focused approach

Competency = [Knowledge + Skills + Dispositions] in Task as shown in figure 3.

Knowledge is the “know-what” component of a competency that is most familiar and commonly associated with any curriculum. These are the factual elements we embed in our catalogues, syllabi, lectures, and associated materials. These are critically important nouns that **define the “what” that is taught in an IS curriculum.** Available through the publications and other intellectual contributions from scholars and practitioners.

Skills are the verbs in competency-task statements that suggest the approach to the application of knowledge. Skill development requires a progression through experience and the application of higher

orders of cognitive load adopting a modified Bloom’s taxonomy of learning objectives as shown in Figure 1, for clarity on complexity and specificity as well.

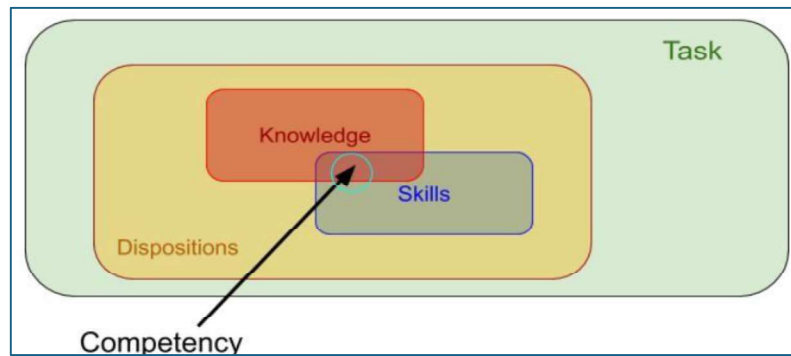


Figure 1: Bloom’s Cognitive Skill List

The inclusion of Bloom’s levels illustrates in Table 2, the close linkage between knowledge-based and competency-based approaches.

On the lower skill levels, students are expected to **“remember” or “understand” knowledge**, which refers to more cognitive aspects of learning.

However, to reach the level “applying” or higher, assignments where students practice the **use of knowledge** in specific tasks provided by a teacher are required.

Table 2: Bloom's Taxonomy action verbs

Definitions	I. Remembering	II. Understanding	III. Applying	IV. Analyzing	V. Evaluating	VI. Creating
Bloom's Definition	Exhibit memory of previously learned material by recalling facts, terms, basic concepts, and answers.	Demonstrate understanding of facts and ideas by organizing, comparing, translating, interpreting, giving descriptions, and stating main ideas.	Solve problems to new situations by applying acquired knowledge, facts, techniques and rules in a different way.	Examine and break information into parts by identifying motives or causes. Make inferences and find evidence to support generalizations.	Present and defend opinions by making judgments about information, validity of ideas, or quality of work based on a set of criteria.	Compile information together in a different way by combining elements in a new pattern or proposing alternative solutions.
Verbs	<ul style="list-style-type: none"> • Choose • Define • Find • How • Label • List • Match • Name • Omit • Recall • Relate • Select • Show • Spell • Tell • What • When • Where • Which • Who • Why 	<ul style="list-style-type: none"> • Classify • Compare • Contrast • Demonstrate • Explain • Extend • Illustrate • Infer • Interpret • Outline • Relate • Rephrase • Show • Summarize • Translate 	<ul style="list-style-type: none"> • Apply • Build • Choose • Construct • Develop • Experiment with • Identify • Interview • Make use of • Model • Organize • Plan • Select • Solve • Utilize 	<ul style="list-style-type: none"> • Analyze • Assume • Categorize • Classify • Compare • Conclusion • Contrast • Discover • Dissect • Distinguish • Divide • Examine • Function • Inference • Inspect • List • Motive • Relationships • Simplify • Survey • Take part in • Test for • Theme 	<ul style="list-style-type: none"> • Agree • Appraise • Assess • Award • Choose • Compare • Conclude • Criteria • Criticize • Decide • Deduct • Defend • Determine • Disprove • Estimate • Evaluate • Explain • Importance • Influence • Interpret • Judge • Justify • Mark • Measure • Opinion • Perceive • Prioritize • Prove • Rate • Recommend • Rule on • Select • Support • Value 	<ul style="list-style-type: none"> • Adapt • Build • Change • Choose • Combine • Compile • Compose • Construct • Create • Delete • Design • Develop • Discuss • Elaborate • Estimate • Formulate • Happen • Imagine • Improve • Invent • Make up • Maximize • Minimize • Modify • Original • Originate • Plan • Predict • Propose • Solution • Solve • Suppose • Test • Theory

4. ARCHITECTURE OF B.TECH CURRICULUM

The architecture is proposed in Figure 2, as a guide for a model curriculum. Constructs on the **left represent the traditional curriculum design view**, (program – program outcome, course – course learning outcomes) and the right represent entities of competency models: **Competency realm, area, competency, knowledge-skill pairs, and dispositions**. Definitions for the terms are presented in Table 3.

The structure is divided into two levels. Level 1 includes the six major elements: Program, Program Learning Outcome, Competency Realm, Competency Area, Competency Statement, and Course. Level 2 includes **Course Learning Outcome and Competency** which is further defined through three elements, namely Knowledge, Skill, and Disposition. Each Competency Area (CA) has a set of detailed competencies.

These competencies are defined using a combination of Competency Statement, Knowledge, Skills and Dispositions that one must have to demonstrate a specific competency under a Competency area. These concepts allow a more detailed comparison of the learning objectives in a course, based on tasks assigned for students, and associated knowledge areas, skill levels, and dispositions. Level 2 aligns with the competency.

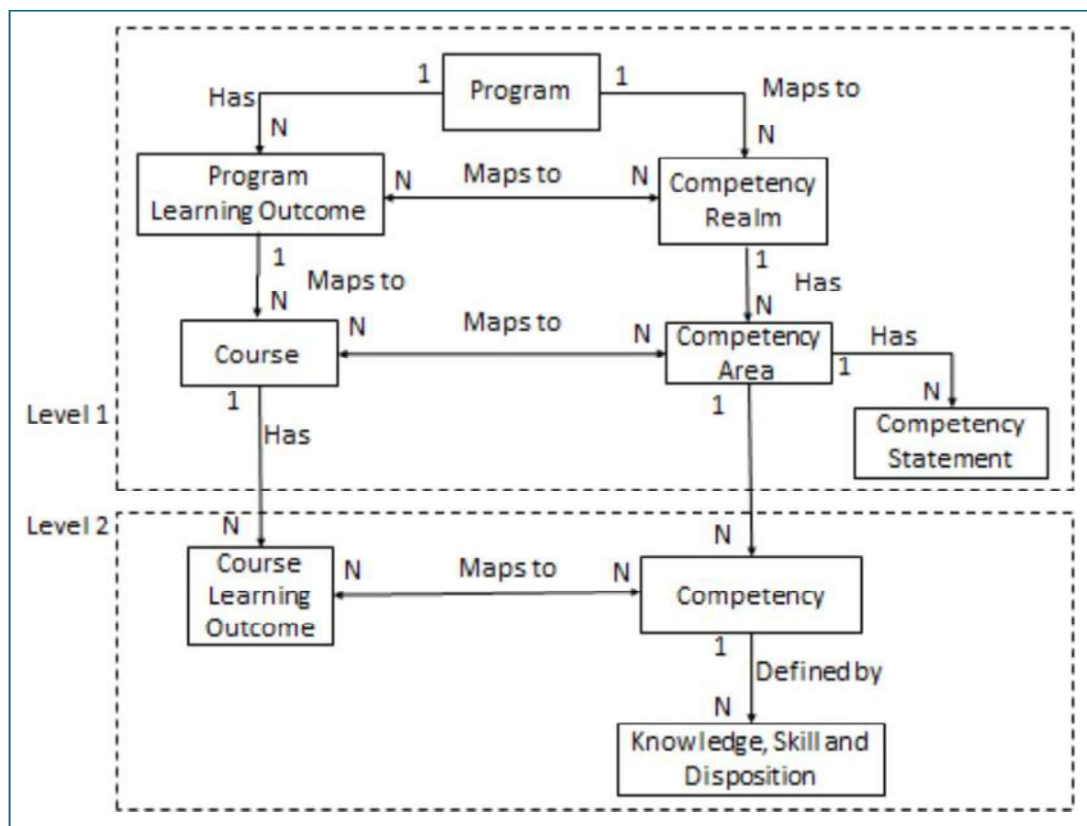


Figure 2: Curriculum Structure of B.Tech Program

Table 3: Definition of Terms Used in the Curriculum structure

Term	Term Definition
Program	Program A major or a complete undergraduate degree program in IS.
Program Learning Outcomes	Defines what students are expected to know and be able to do on completing the program. They are similar to ABET Student Outcomes.
Competency Realm	Broad areas of study relevant to an IS graduate
Competency Area	A component of the Competency Realm
Competency Statement.	A high-level description of the capability to apply or use a set of knowledge and skills required to successfully perform broad work functions related to a Competency Area.
Course description	A description of what will be covered in the course. They are generally less broad than Program Learning Outcomes and broader than Course Learning Outcomes.
Course Learning Outcome	A detailed description of what a student must be able to do on completion of a course. When writing outcomes, it is helpful to use verbs that are measurable or that describe an observable action.
Competency	A detailed description of the capability to apply or use a set of knowledge, skills, and dispositions to successfully perform specific work tasks related to a Competency Area

5 PROGRAM EDUCATIONAL OBJECTIVES (PEOs)

Broad statements that describe the career and professional accomplishments of graduates within five (5) years upon graduation. The graduates are expected to achieve one or more of the following PEO:

1. Excel in engineering practices in various industries.
2. Establish themselves as leaders in their professional careers.
3. Earn an advanced degree or professional certification.

Program Educational Objectives (PEOs) should be defined by the Head of the Department in consultation with the faculty members. PEOs are a promise by the department to the aspiring students about what they will achieve once they join the programme. PEO assessment is not made compulsory by NBA as it is quite difficult to measure in Indian context. NBA assessors usually do not ask for PEO assessment. PEOs are about professional and career accomplishment after 4 to 5 years of graduation. PEOs can be written from different perspectives like Career, Technical Competency and Behaviour. While writing the PEOs do not use the technical terms as it will be read by prospective students who wants to join the programme. Three to five PEOs are recommended.

Program Educational Objective – I: Preparation & Learning Environment:

To provide students with a sound foundation in the mathematical, scientific and engineering fundamentals necessary to formulate, solve and analyse engineering problems.

Program Educational Objective – II: Core Competence:

To prepare students for successful careers in industry that meet the needs of local, Indian and multinational companies.

Program Educational Objective – III: Breadth:

To develop the ability among students to synthesize data and technical concepts for application to product design and prepares students to work as part of teams on multidisciplinary projects.

Program Educational Objective – IV: Professionalism:

To promote student awareness for life-long learning and to introduce them to codes of professional practice, ethics and prepare them for higher studies.

With a view to challenge ourselves and to nurture diverse capabilities for professional and intellectual growth for our students it is important for the department to define departmental objectives in generalized and broad format. Adherence to these objectives is proposed to be demonstrated through actions or achievements.

5.1 Mapping of program educational objectives to program outcomes and program specific outcomes:

Mapping program educational objectives to program outcomes and program specific outcomes shown in table 4 and table 5 respectively which ensures the curriculum aligns with key competencies, enabling students to develop the skills and knowledge required for professional success.

Table 4: The correlation between the PEOs and POs

PEO - I	PEO - II	PEO - III	PEO - IV
PO: 1, 2, 3, 6, 7, 8, 9, 10,11	PO: 1, 2, 3, 4, 5, 6, 9, 10,11	PO: 1, 2, 6, 9, 11	PO: 4, 5, 6, 7, 8, 9, 10,11

Table 5: The correlation between the PEOs and the PSOs

PEO - I	PEO - II	PEO - III	PEO - IV
PSO: 1, 2, 3	PSO: 1, 2, 3	PSO: 1, 2, 3	PSO: 1, 2, 3

6. PROGRAM OUTCOMES (POs)

A Program Learning Outcome is broad in scope and be able to do at the end of the program. POs are to be in line with the graduate attributes as specified in the Washington Accord. POs are to be specific, measurable and achievable. NBA has defined 11 POs as shown in Table 6 and you need not define those POs by yourself and it is common for all the institutions in India. In the syllabus book given to students, there should be clear mention of course objectives and course outcomes along with CO-PO course articulation matrix for all the courses.

Program outcomes are the statements of **what a student is expected to know, understand and/or be able to demonstrate after completion of a process of learning**. The Process of learning could be, for example, a lecture, module, or an entire program. These POs mainly relate to the **knowledge, skills and attitudes** that students acquire while progressing through the program. Specifically, it is to be established that the students have acquired the defined Program Outcomes.

The program must demonstrate that by the time of graduation the students have attained a certain set of knowledge, skills and behavioural traits, at-least to some acceptable minimum level. The minimum threshold value should not be less than 50% even to begin with; however, as the program progresses through its evolution, it is expected that this minimum threshold value would subsequently be raised to higher value. Specifically, it is to be demonstrated that all students of a batch to be accredited have acquired the following POs set by NBA.

Table 6: Program Outcomes

PO Number	Category	Description	Learning Taxonomy
PO1	Engineering Knowledge Breadth, depth and type of knowledge, both theoretical and practical	Apply the knowledge of mathematics, basic sciences, engineering fundamentals, and mechanical engineering specialization to solve complex mechanical engineering problems related to design, manufacturing, thermal systems, materials, and energy systems. (WK1 to WK4).	Cognitive
PO2	Problem Analysis Complexity of analysis	Identify, formulate, review research literature, and analyse complex engineering problems in mechanical engineering reaching conclusions using first principles of mathematics, natural sciences, and engineering sciences. (WK1 to WK4).	Cognitive
PO3	Design / Development of Solutions Breadth and uniqueness of engineering problems i.e., the extent to which problems are original and to which solutions have not previously been identified or codified	Design and develop mechanical engineering solutions for complex engineering problems, including mechanical systems, thermal systems, manufacturing processes, and energy systems that meet specified functional and performance requirements, with appropriate consideration for public health and safety, and cultural, societal, and environmental factors. (WK5)	Cognitive
PO4	Conduct Investigations of Complex Problems Breadth and depth of investigation and experimentation	Conduct systematic investigations of complex problems in mechanical engineering using research-based knowledge and research methods including design of experiments, analysis and interpretation of data, and synthesis of the information to provide valid conclusions. (WK8)	Cognitive, Psychomotor
PO5	Engineering Tool Usage Level of understanding of the appropriateness of technologies and tools	Create, select, and effectively apply appropriate algorithms, computational techniques and modern tools to solve complex problems in mechanical engineering, including prediction, simulation, and modelling to complex engineering activities with an	Cognitive, Psychomotor

		understanding of the limitations. (WK2 and WK6)	
PO6	The Engineer and the World Level of knowledge and responsibility for sustainable development	Analyze and evaluate the societal, ethical, legal, economic, and environmental aspects of mechanical engineering solutions while addressing complex engineering problems for its impact on sustainability with reference to economy, health, safety, legal framework, culture and environment. (WK1, WK5, and WK7)	Cognitive, Affective
PO7	Ethics Understanding and level of practice	Apply ethical principles and commit to professional ethics and responsibilities and norms of the engineering and responsible mechanical engineering practice. (WK9)	Cognitive, Affective
PO8	Individual and Collaborative Team work Role in and diversity of team	Function effectively as an individual, and as a member or leader in diverse teams, and in multidisciplinary settings while contributing to the development and deployment of mechanical engineering solutions. (WK9)	Cognitive, Affective
PO9	Communication Level of communication according to type of activities performed	Communicate effectively on complex problems in mechanical engineering earning activities with the engineering community and with society at large, such as, being able to comprehend and write effective reports and design documentation, make effective presentations, and give and receive clear instructions. (WK1 and WK9)	Affective
PO10	Project Management and Finance Level of management required for differing types of activity	Demonstrate knowledge and understanding of the engineering and management principles and apply these to mechanical engineering projects, as a member and leader in a team, to manage projects and in multidisciplinary environments. (WK2 and WK5)	Cognitive, Affective
PO11	Life-Long Learning Duration and manner	Recognize the need for, and have the preparation and ability to engage in independent and life-long learning to keep pace with rapid technological advancements in mechanical engineering and related emerging domains. (WK8)	Affective

7. PROGRAM SPECIFIC OUTCOMES (PSOs)

Program specific outcomes (PSOs) include subject-specific skills and generic skills, including transferable global skills and competencies, the achievement of which the students of a specific program of study should be able to demonstrate for the award of the degree. Program Specific Outcomes for each program, they are permitted up to **3 (three)**.

The program specific outcomes would also focus on knowledge, skills and competencies that prepare students for further study, employment, and citizenship. The evaluation of PSOs for a program is computed by gathering PSO attainment in all the courses comprising the program. The table 7, shows the Program specific outcomes of the Mechanical Engineering Department.

Table 7: A list of PSOs for the department of Mechanical Engineering

PSO1	Focus on Ideation and research towards digital manufacturing in Product development using additive manufacturing, computer numerical control (CNC) simulation and high-speed machining.
PSO2	Formulate and evaluate concepts of thermo-fluid systems to provide solutions for Inter disciplinary Engineering Applications.
PSO3	Make use of computational and experimental tools for building career paths towards Innovation startups, employability and higher studies.

8. RELATION BETWEEN PROGRAM EDUCATIONAL OBJECTIVES AND PROGRAM OUTCOMES AS WELL AS PROGRAM SPECIFIC OUTCOMES

The relationship between Program Educational Objectives (PEOs) and Program Outcomes (POs) is crucial as it ensures that the educational goals are aligned with specific outcomes, equipping students with the skills and knowledge needed for their professional success. Broad relationship between the program educational objectives and the program outcomes is given in Table 8.

Table 8: Relationship between program educational objectives and the program outcomes

Program Outcomes		Program Educational objectives			
		PEO1	PEO2	PEO3	PEO4
		Preparation & Learning Environment	Core Competence	Breadth	Professionalism
PO1	Engineering Knowledge Breadth, depth and type of knowledge, both theoretical and practical	3	1	2	-
PO2	Problem Analysis Complexity of analysis	2	2	2	-
PO3	Design / Development of Solutions Breadth and uniqueness of engineering problems i.e., the extent to which problems are original and to which solutions have not previously been identified or codified	2	3	-	-
PO4	Conduct Investigations of Complex Problems Breadth and depth of investigation and experimentation	-	3	-	2
PO5	Engineering Tool Usage Level of understanding of the appropriateness of technologies and tools	-	2	-	2
PO6	The Engineer and the World Level of knowledge and responsibility for sustainable development	2	3	2	2
PO7	Ethics Understanding and level of practice	2	-	-	2
PO8	Individual and Collaborative Team work Role in and diversity of team	2	-	-	3
PO9	Communication Level of communication according to type of activities performed	2	1	2	3
P10	Project Management and Finance Level of management required for differing types of activity	1	2	-	2

PO11	Life-Long Learning Duration and manner	1	1	2	1
------	--	---	---	---	---

Relationship between Program Outcomes and Program Educational Objectives

Key: 3 = High; 2 = Medium; 1= Low

Note:

- The assessment process of POs can be direct and indirect.
- The direct assessment will be done through interim assessment by conducting continuous internal exam and semester end exams.
- The indirect assessment on the other hand could be done through student's programme exit questionnaire, alumni survey and employment survey.

Relation between the Program Educational Objectives and the PSOs

The relationship between Program Educational Objectives (PEOs) and Program Outcomes (POs) is crucial as it ensures that the educational goals are aligned with specific outcomes, equipping students with the skills and knowledge needed for their professional success. Broad relationship between the program educational objectives and the program specific outcomes is given in Table 9.

Table 9: Relationship between program educational objectives and program specific outcomes

Program Specific Outcomes		Program Educational Objectives (PEO)			
		PEO 1	PEO 2	PEO 3	PEO 4
		Preparation & Learning Environment	Core Competence	Breadth	Professionalism
PSO1	Focus on Ideation and Research towards Digital manufacturing in Product development using Additive manufacturing, Computer Numerical Control (CNC) simulation and high-speed machining	2	3	3	2
PSO2	Formulate and Evaluate concepts of Thermo-Fluid Systems to provide solutions for Inter Disciplinary Engineering Applications	3	2	3	2
PSO3	Make use of Computational and Experimental tools for Building Career Paths towards Innovation Startups, Employability and Higher Studies	2	2	2	2

Relationship between Program Specific Outcomes and Program Educational Objectives

Key: 3 = High; 2 = Medium; 1= Low

Note:

- The assessment process of POs and PSOs can be direct or indirect.
- The direct assessment will be done through interim assessment by conducting continuous internal examinations (CIE) and semester end examinations (SEE).
- The indirect assessment on the other hand could be done through student’s programme exit survey, alumni survey and employer survey.

9. LEARNING DOMAINS (LD) - BLOOMS TAXONOMY

Benjamin Bloom in 1956 developed a 3-part model known as the Taxonomy of Learning Domains. He splits learning into 3 different categories:

1. Cognitive domain (intellectual capability, i.e., knowledge, or 'think')
2. Affective domain (feelings, emotions and behaviour, i.e., attitude, or 'feel')
3. Psychomotor domain (manual and physical skills, i.e., skills, or 'do')

Bloom’s Taxonomy is commonly used for the cognitive domain, Simpson’s for the psychomotor domain, and Krathwohl’s for the affective domain.

Bloom sees the domains as progressive; with the learner moving through the 6 stages of each domain as their knowledge, attitude and skills increase or develop. For the purpose of student assessment, these categories will be reclassified into twelve levels of LD. These levels are listed are shown in below Tables 10, 11 and 12.

9.1 Six levels of the Cognitive Domain

Bloom’s taxonomy / Cognitive Domain is frequently used for writing learning outcomes as it provides a ready-made structure and list of verbs. These verbs are the key to writing learning outcomes. since learning outcomes are concerned with what the students can do at the end of the learning activity, all these verbs are active (action) verbs.

The framework (revised Taxonomy in 2001) elaborated by Bloom and his collaborators consisted of six major categories: Remember, Understand, Apply, Analyze, Evaluate and Create (graphic representation of revised Blooms taxonomy is shown in figure 3).

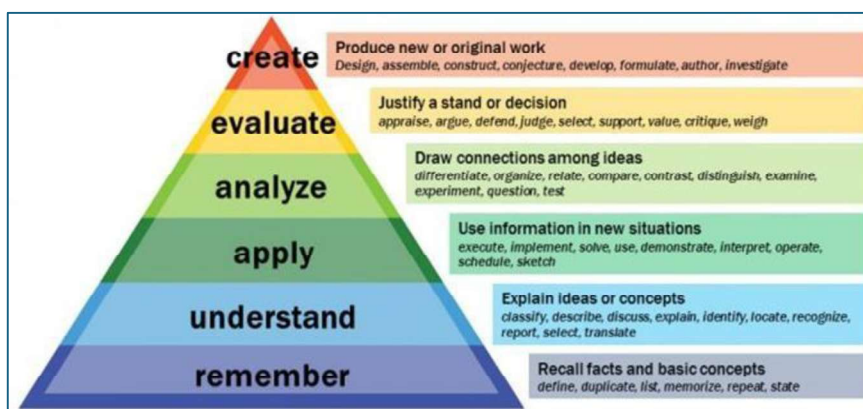


Figure 3: Graphic representation of revised Blooms Taxonomy

The categories after Knowledge were presented as “skills and abilities,” with the understanding that knowledge was the necessary precondition for putting these skills and abilities into practice.

Bloom’s taxonomy / Cognitive Domain is frequently used for writing learning outcomes as it provides a ready-made structure and list of verbs. These verbs are the key to writing learning outcomes as shown in table 2. Since learning outcomes are concerned with what the students can do at the end of the learning activity, all of these verbs are active (action words) verbs.

Table 10: Cognitive domain levels

CLD*	Category	Description
CLD1	Remember	Recognizing or recalling knowledge from memory. Remembering is when memory is used to produce definitions, facts, or lists, or recite or retrieve material.
CLD2	Understand	Constructing meaning from different types of functions be they have written or graphic messages activities like interpreting, exemplifying classifying, summarizing, inferring, comparing, and explaining.
CLD3	Apply	Carrying out or using a procedure through executing, or implementing. Applying related and refers to situations where learned material is used through products like models, presentations, interviews or simulations.
CLD4	Analyze	Breaking material or concepts into parts, determining how the parts relate or interrelate to one another or to an overall structure or purpose. Mental actions included in this function are differentiating, organizing, and attributing, as well as being able to distinguish between the components or parts. When one is analysing, he/she can illustrate this mental function by creating spreadsheets, surveys, charts, or diagrams, or graphic representations.
CLD5	Evaluate	Making judgments based on criteria and standards through checking and critiquing. Critiques, recommendations, and reports are some of the products that can be created to demonstrate the processes of evaluation. In the newer taxonomy evaluation comes before creating as it is often a necessary part of the precursory behaviour before creating something.
CLD6	Create	Putting elements together to form a coherent or functional whole; reorganizing elements into a new pattern or structure through generating, planning, or producing. Creating requires users to put parts together in a new way or synthesize parts into something new and different a new form or product. This process is the most difficult mental function in the new taxonomy.

CLD*: Course learning domain

These “action words” describe the cognitive processes by which thinkers encounter and work with knowledge:

- **Remember**
 - Recognizing
 - Recalling
- **Understand**
 - Interpreting
 - Exemplifying
 - Classifying
 - Summarizing
 - Inferring
 - Comparing
 - Explaining
- **Apply**
 - Executing
 - Implementing

- **Analyze**
 - Differentiating
 - Organizing
 - Attributing
- **Evaluate**
 - Checking
 - Critiquing
- **Create**
 - Generating
 - Planning
 - Producing

In the revised taxonomy, knowledge is at the basis of these six cognitive processes, but its authors created a separate taxonomy of the types of knowledge used in cognition:

- **Factual Knowledge**
 - Knowledge of terminology
 - Knowledge of specific details and elements
- **Conceptual Knowledge**
 - Knowledge of classifications and categories
 - Knowledge of principles and generalizations
 - Knowledge of theories, models, and structures
- **Procedural Knowledge**
 - Knowledge of subject-specific skills and algorithms
 - Knowledge of subject-specific techniques and methods
 - Knowledge of criteria for determining when to use appropriate procedures
- **Metacognitive Knowledge**
 - Strategic Knowledge
 - Knowledge about cognitive tasks, including appropriate contextual and conditional knowledge
 - Self-knowledge

9.2 Three levels (based on the original five categories) of the Affective Domain.

This domain is concerned with issues relating to the emotional component of learning and ranges from basic willingness to receive information to the integration of beliefs, ideas and attitudes. In order to describe the way in which things emotionally dealt.

Table 11: Levels of Affective domain

ALD*	Category	Description
ALD1	Receiving	This refers to the learner's sensitivity to the existence of stimuli – awareness, willingness to receive, or selected attention.
	Responding	This refers to the learners' active attention to stimuli and his/her motivation to learn – acquiescence, willing responses, or feelings of satisfaction.
ALD2	Valuing	This refers to the learner's beliefs and attitudes of worth – acceptance, preference, or commitment. An acceptance, preference, or commitment to value.
	Organization	This refers to the learner's internalization of values and beliefs involving (1) the conceptualization of values; and (2) the organization of a value system. As values or beliefs become internalized, the learner organizes them according to priority.
ALD3	Characterization	This refers to the learner's highest of internalization and relates to behaviour that reflects (1) a generalized set of values; and (2) a characterization or a philosophy about life. At this level, the learner is capable of practising and acting on their

		values or beliefs.
--	--	--------------------

ALD* = Affective Learning domain

9.3 Three levels (based on the five original categories) of the Simpson's Psychomotor Domain.

The psychomotor domain is commonly used in areas of laboratory science subjects, engineering and physical education (Sports).

Table 12: Levels of Psychomotor domain

PLD*	Category	Description
PLD1	Perception set	The ability to use sensory cues to guide motor activity. This ranges from sensory stimulation, through cue selection, to translation.
		Readiness to act. It includes mental, physical, and emotional sets. These three sets are dispositions that predetermine a person's response to different situations (sometimes called mindsets).
PLD2	Guided Response	The early stages in learning a complex skill that includes imitation and trial and error. Adequacy of performance is achieved by practicing.
	Mechanism	This is the intermediate stage in learning a complex skill. Learned responses have become habitual and the movements can be performed with some confidence and proficiency.
PLD3	Complex / Overt Response	The skilful performance of motor acts that involve complex movement patterns. Proficiency is indicated by a quick, accurate, and highly coordinated performance, requiring a minimum of energy. This category includes performing without hesitation and automatic performance. For example, players often utter sounds of satisfaction or expletives as soon as they hit a tennis ball or throw a football because they can tell by the feel of the act what the result will produce.
	Adaptation	Skills are well developed and the individual can modify movement patterns to fit special requirements.
	Origination	Creating new movement patterns to fit a particular situation or specific problem. Learning outcomes emphasize creativity based on highly developed skills.

PLD * = Psychomotor learning domain

Understanding what "domain" we are trying to enable learners to achieve can help us to write appropriate educational objectives as well as consider how to evaluate the success of these objectives.

If we are essentially providing information; we would be assessing the learner's knowledge following teaching.

If we are encouraging students to consider a subject from multiple perspectives and to develop a professional attitude; we are assessing the affective domain. Assessing the affective domain is more difficult as personal belief systems differ, however in education the process learners go through to develop attitudes can be assessed.

If we are assessing learners' ability to perform tasks etc, we are assessing the skills domain; the "know how".

10 KNOWLEDGE AND ATTITUDE PROFILE (WK) AND INDICATORS OF ATTAINMENT

The list of WKs defines indicated volume of learning and attributes against which graduates must be able to perform. The list is used to extend and clarify the definition of the Program Outcomes.

In order to inculcate different dimensions of thinking mathematical, computational, design and creativeness among students in cognitive, affective and psychomotor domains, the curriculum is designed to cover the following nine knowledge and attitude profiles. These profiles reflect an indicated volume of learning and the work attitude against which graduates must be able to perform.

This list of Wks extracted verbatim from the 2024 NBA document are shown in Table 13, and Table 14 is representing their indicators of attainment.

Table 13: Knowledge and Attitude Profiles

WK	Knowledge and attitude Profile
WK1	A systematic, theory-based understanding of the natural sciences applicable to the discipline and awareness of relevant social sciences .
WK2	Conceptually-based mathematics , numerical analysis, data analysis, statistics and formal aspects of computer and information science to support detailed analysis and modelling applicable to the discipline.
WK3	A systematic, theory-based formulation of engineering fundamentals required in the engineering discipline.
WK4	Engineering specialist knowledge that provides theoretical frameworks and bodies of knowledge for the accepted practice areas in the engineering discipline; much is at the forefront of the discipline.
WK5	Knowledge, including efficient resource use, environmental impacts, whole-life cost, re-use of resources, net zero carbon, and similar concepts, that supports engineering design and operations in a practice area.
WK6	Knowledge of engineering practice (Technology) in the practice areas in the engineering discipline.
WK7	Knowledge of the role of engineering in society and identified issues in engineering practice in the discipline, such as the professional responsibility of an engineer to public safety and sustainable development.
WK8	Engagement with selected knowledge in the current research literature of the discipline, awareness of the power of critical thinking and creative approaches to evaluate emerging issues.
WK9	Ethics, inclusive behaviour and conduct . Knowledge of professional ethics, responsibilities, and norms of engineering practice. Awareness of the need for diversity by reason of ethnicity, gender, age, physical ability etc. with mutual understanding and respect, and of inclusive attitudes.

Table 14: List of Wks extracted verbatim from the 2024 NBA and their indicators of attainment

Number	Indicators of attainment (IA)	No of Indicators of Attainment
WK1	Application of Natural sciences	01
	WK 1a Applying concepts of natural sciences viz., physics, chemistry, social science, and discipline specialized engineering science fundamentals for solving respective problems / applications	
WK2	Analytical skills -Numerical analysis, data analysis, statistics, modelling and Modern engineering & IT tools	08
	WK 2a The use of algorithms and numerical approximation techniques in mathematical analysis as applied to engineering problems	
	WK 2b Development of an analytical, numerical, or empirical description of a real system	

	WK 2c	The knowledge and skills required to analyse data (data awareness, cleaning, discovery, ethics, exploration, tools, and visualization) including developing an analytical plan; selecting and using appropriate statistical techniques and tools; and interpreting, evaluating, and comparing results with other findings	
	WK 2d	Ability to use statistical principles to summarize data and draw conclusions from it	
	WK 2e	Identifies all relevant constraints and requirements and formulates an accurate description of the problem	
	WK 2f	Develop the models that can be mathematical or physical in nature and are created with the specific intent of describing, analysing, testing, demonstrating, and/or predicting behaviours, properties, or other characteristics of the system	
	WK 2g	The knowledge and skills to use computer systems to store and manipulate large quantities of information	
	WK 2h	Use algorithms, computational tools, simulation and modelling techniques with data visualization for effective analysis.	
WK3	Theory-based formulation		03
	WK 3a	Gathers engineering knowledge from the open literature and discerns the most relevant	
	WK 3b	Theoretical problem identification, model formulation and data collection	
	WK 3c	Evaluates the analysis for accuracy and validity of assumptions made.	
WK4	Engineering specialist knowledge		03
	WK 4a	Applying engineering specialist knowledge for evaluation and validation of the assumptions made.	
	WK 4b	Understanding of standards, innovation and critical analysis for accepted practices	
	WK 4c	Apply engineering management principles to effectively implement economic decision-making.	
WK5	Knowledge of resource use, Environmental impacts, Net-zero carbon support Engineering design and operations and Constraints and Boundaries		6
	WK 5a	Demonstrates originality in developing design solutions that incorporate social values and local considerations of sustainable development impacts.	
	WK 5b	Use of modern modelling and computational tools for system design / component design / process design for problem analysis and re-use of sources for improving efficiency / optimization.	
	WK 5c	Evaluates the feasibility of alternative solutions in all relevant contexts which, as appropriate to the problem, may include: technical, sustainability, suitability for implementation, economic, aesthetic, ethical, health and safety, societal, environmental and cultural.	
	WK 5d	Investing in projects, implementing measures, identifying and reducing major sources of emissions such as improving energy efficiency, transitioning to renewable energy, and adopting low-carbon technologies	
	WK 5e	Waste minimization and resource reuse compliance with environmental regulations and impact assessment.	
	WK 5f	Describes the preferred solution and presents the findings including technical constraints, budgetary limitations, time constraints and secondary impacts in a coherent written form and defends those findings orally.	
WK6	Knowledge of engineering practice (technology), in the practice areas in the engineering discipline		03
	WK 6a	Identifies the range of current tools and resources available, selects one or more suitable tools and/or appropriate resources, and justifies the selection including considerations of the limitations of the tools	

		available.	
	WK 6b	Applies such tools to simulate behaviour or model outcomes that might resolve a complex engineering problem, checks the results for validity, evaluates results and recognises the limitations on those results.	
	WK 6c	Integration of measurement systems for process parameters with engineering design in the practice areas.	
WK7	Knowledge of the role of engineering in society, issues in engineering practice in the discipline and professional responsibility to public safety and sustainable development.		04
	WK 7a	Identifies risks, develops and evaluates risk management strategies to minimize the likelihood of significant consequences (such as injury or loss of life, major environmental damage, or significant economic loss) occurring in unusual or unexpected circumstances.	
	WK 7b	Identifies hazards and justifies relevant strategies and systems to reasonably assure public health and safety (including as appropriate to the discipline, safety in construction/fabrication, operation, maintenance, deconstruction/disposal, failing-safe and occupational health and safety).	
	WK 7c	Identifies and justifies specific actions required for environmental protection in the event of failure and to address cultural or community concerns.	
	WK 7d	Advanced student project work involves students developing sustainable design solutions and undertakes life-cycle analysis and ensures relevant regulations and legislations for compliance.	
WK8	Engagement with selected knowledge in the current research literature of the discipline, awareness of the power of critical thinking, creative approaches to evaluate emerging issues		07
	WK 8a	Reviews the open research literature and identifies the needs for investigation methodologies.	
	WK 8b	Understanding of appropriate codes of practice and industry standards awareness of quality issues	
	WK 8c	Designs and executes valid forms of research, experimentation or measurement.	
	WK 8d	Use creative ability to identify, classify and describe the performance of systems and components through the use of analytical methods and modelling techniques and including considering sources of error	
	WK 8e	Ability to apply qualitative and quantitative methods for evaluating emerging complex engineering problems.	
	WK 8f	Draws valid conclusions and justifies those conclusions.	
	WK 8g	Calibrates / validates the data collection methods and equipment.	
WK9	Engineering ethics; Respect; Diversity and Inclusivity; Honouring all – Laws, Regulations and Codes		06
	WK 9a	Demonstrates an understanding of the moral responsibilities of a professional engineer including need to self-manage in an orderly and ethical manner, to balance obligations to the interests of employers and clients, and to uphold standards in the engineering profession.	
	WK 9b	Identifies and justifies ethical courses of action when confronted with complex situations that might arise in the work of a professional engineer.	
	WK 9c	Identifies and justifies the use or otherwise of new technologies, such as but not limited to, Generative AI.	
	WK 9d	Evaluates the ethical dimensions of professional practice (diversity and inclusivity) and demonstrates ethical behaviour.	
	WK 9e	High degree of trust and integrity for professional obligations in an organization.	
	WK 9f	Comprehends how legislative, regulatory, contract law, other common law and professional obligations apply and manages own activities to	

		comply.	
--	--	---------	--

11. ENGINEERING COMPETENCE (EC) PROFILES

A professionally or occupationally competent person has the attributes necessary to perform the activities within the profession or occupation to the standards expected in independent employment or practice. The engineering competence (EC) profiles - complex engineering problems (CP) and complex engineering activities (CA) record the elements of competence necessary for performance that the professional is expected to be able to demonstrate in a holistic way the stage of attaining. **Complex Engineering Problems** have characteristic WK1 and some or all of WK2 to WK9. Also, there are a Range of **Complex Engineering Activities (CA)** involved in when solving complex engineering problems.

Engineering competence can be described using a setoff attribute corresponding largely to the program outcomes (POs), but with different emphases. For example, at the professional level, the ability to the responsibility in the real-life situation is essential. Unlike the program outcomes, engineering competence is more than a set of attributes that can be demonstrated individually.

Competence must be assessed holistically. **TWELVE** elements of engineering competences for a global benchmarking are mentioned in Table 15.

Table 15: Engineering Competence Profiles

EC	Attributes	Descriptors for Rubric Design
EC 1	Depth of knowledge required (CP)	Ensures that all aspects of an engineering activity are soundly based on fundamental principles - by diagnosing, and taking appropriate action with data, calculations, results, proposals, processes, practices, and documented information that may be ill-founded, illogical, erroneous, unreliable or unrealistic requirements applicable to the engineering discipline
EC 2	Depth of analysis required (CP)	Have no obvious solution and require abstract thinking, originality in analysis to formulate suitable models.
EC 3	Design and development of solutions (CA)	Support sustainable development solutions by ensuring functional requirements, minimize environmental impact and optimize resource utilization throughout the life cycle, while balancing performance and cost effectiveness.
EC 4	Range of conflicting requirements - (CP)	Competently addresses complex engineering problems which involve uncertainty, ambiguity, imprecise information and wide-ranging or conflicting technical, engineering and other issues.
EC 5	Infrequently encountered issues (CP)	Conceptualises alternative engineering approaches and evaluates potential outcomes against appropriate criteria to justify an optimal solution choice.
EC 6	Protection of society (CA)	Identifies, quantifies, mitigates and manages technical, health, environmental, safety, economic and other contextual risks associated to seek achievable sustainable outcomes with engineering application in the designated engineering discipline.
EC 7	Range of resources (CA)	Involve the coordination of diverse resources (and for this purpose, resources include people, money, equipment, materials, information and technologies) in the timely delivery of outcomes
EC 8	Extent of stakeholder involvement - (CP)	Design and develop solution to complex engineering problem considering a very perspective and taking account of stakeholder views with widely varying needs.
EC 9	Extent of applicable Codes, Legal and Regulatory- (CP)	Meet all level, legal, regulatory, relevant standards and codes of practice, protect public health and safety in the course of all engineering activities.
EC 10	Interdependence - (CP)	High level problems including many component parts or sub-problems, partitions problems, processes or systems into manageable elements for

EC	Attributes	Descriptors for Rubric Design
		the purposes of analysis, modelling or design and then re-combines to form a whole, with the integrity and performance of the overall system as the top consideration.
EC 11	Continuing Professional Development (CPD) and lifelong learning (CA)	Undertake CPD activities to maintain and extend competences and enhance the ability to adapt to emerging technologies and the ever-changing nature of work.
EC 12	Judgement - (CA)	Recognize complexity and assess alternatives in light of competing requirements and incomplete knowledge. Require judgement in decision making in the course of all complex engineering activities.

The **engineering competence** profiles are stated generically and are applicable to all engineering disciplines. The application of a competence profile may require application in different regularly, disciplinary, occupational or environment contexts.

Complex Engineering Problems need to think broadly and systematically in the context of

- Complex problems
- Difficult decision
- Uncertain strategy
- Confusion idea
- Contentious Product
- Interactable change

The differences between technical problems and complex engineering problems based on various criteria is as shown in Table 16.

Table 16: Differences between technical problems and complex engineering problems

Aspect	Technical Problems	Complex Engineering Problems
Definition	Problems with well-defined solutions that require basic technical knowledge.	Problems that are broad, ambiguous, and require advanced knowledge across multiple domains.
Scope	Narrow and well-defined.	Broad, involving multiple interconnected systems and disciplines.
Difficulty Level	Stable and /or predictable problem Parameters	Unstable and /or unpredictable problem Parameters
Knowledge Requirement	Multiple low risk experiments are possible.	Multiple experiments are not possible.
Solution Approach	Solutions are often straightforward and based on standard practices.	Solutions involve iteration, optimization, and may need novel approaches
No. of solutions	Limited set of alternative solutions	No bounded set of alternative solutions
Uncertainty	Low uncertainty; variables are usually known and controlled.	High uncertainty; may involve unknown variables and unpredictable factors.
Example	Single optimal and testing solutions and clearly recognized	No single optimal and /or objectively testable solutions
Collaboration Needed	Usually, can be solved by an individual or small team.	Requires collaboration among large, diverse teams and stakeholders.

12. GUIDELINES FOR WRITING COURSE OUTCOME STATEMENTS

A **Course Outcome** is a formal statement of what students should able to know, do and value by the end of the course.

When creating Course Outcomes remember that the outcomes should clearly state what students will do or produce to determine and/or demonstrate their learning.

The CO statement is intended or desired learning gains, faculty members expect the students to develop, learn master during the course in terms of:

1. Declarative knowledge (factual, conceptual, procedural),
2. Functional knowledge (knowledge transfer),
3. Metacognitive knowledge (Improved Problem-Solving Skills)
4. Cognitive skills (Improved Critical Thinking, Stronger Analytical Skills and Greater Creativity)
5. Practical skills (Enhanced Technical Proficiency, Improved Application of Knowledge, Greater Adaptability, Increased Collaboration and Teamwork and Boosted Confidence in Real-World Tasks)
6. Habits of mind (Enhanced Persistence and Resilience, Greater Flexibility in Thinking, Increased Reflective Practice, Strengthened Ethical and Responsible Decision-Making)
7. Performance (Enhanced Skill Mastery, Stronger Communication and Presentation Skills) and
8. ways to respond to events and people as a result of the learning experiences in the course/module.

It contains the measurable action verbs, the substance/content to be learned, and the targeted competency level.

A well-formulated set of Course Outcomes will describe what a faculty member hopes to successfully accomplish in offering their particular course(s) to prospective students, or what specific skills, competencies, and knowledge the faculty member believes that students will have attained once the course is completed. The course outcomes need to be concise descriptions of what learning is expected to take place by course completion.

12.1 Developing Course Outcomes

When creating course outcomes consider the following guidelines as to develop them either individually or as part of a multi-section group:

- Limit the course outcomes to **5-6** statements for the entire course [more detailed outcomes can be developed for individual units, assignments, chapters, etc. if the instructor(s) wish (es)].
- Focus on overarching knowledge and/or skills rather than small or trivial details.
- Focus on knowledge and skills that are central to the course topic and/or discipline.
- Create statements that have a student focus rather than an instructor centric approach (basic e.g., “upon completion of this course students will be able to list the names of the 28 states and 8 union territories” versus “one objective of this course is to teach the names of the 28 states and 8 union territories”).
- Focus on the learning that *results* from the course rather than describing activities or lessons that are in the course.
- Incorporate and/or reflect the institutional and departmental missions.
- Include various ways for students to show success (outlining, describing, modelling, depicting, etc.) rather than using a single statement such as “at the end of the course, students will know__“as the stem for each expected outcome statement.
- The keywords used to define COs are based on Bloom’s Taxonomy.

When developing learning outcomes, here are the core questions to ask yourself:

- *What do we want students in the course to learn?*
- *What do we want the students to be able to do?*
- *Are the outcomes observable, measurable and are they able to be performed by the students?*

Course outcome statements on the course level describe:

1. What faculty members want students to know at the end of the course and
2. What faculty members want **students to be able to do** at the end of the course?

Course outcomes have three major characteristics

1. They specify an action by the students/learners that is **observable**
2. They specify an action by the students/learners that is **measurable**
3. They specify an action that is done by the **students / learners** rather than the faculty members.

Effectively developed expected learning outcome statements should possess all three of these characteristics. When this is done, the expected learning outcomes for a course are designed so that they can be assessed. When stating expected learning outcomes, it is important to use **verbs** that describe exactly what the student(s) / learner(s) will be able to *do* upon completion of the course.

Relationship of Course Outcome to Program Outcome

The Course Outcomes need to link to the Program Outcomes. Use the following learning outcomes formula:

STUDENTS SHOULD BE ABLE TO + BEHAVIOR + RESULTING EVIDENCE

For example, you can use the following template to help you write an appropriate course level learning outcome.

“Upon completion of this course students will be able to (*knowledge, concept, rule or skill you expect them to acquire*) by (*how will they apply the knowledge or skill/how will you assess the learning*).”

Characteristics of Effective Course Outcomes:

Well written course outcomes:

- Describe what you want your students to learn in your course.
- Are aligned with program goals and objectives.
- Tell how you will know an instructional goal has been achieved.
- Use action words that specify definite, observable behaviours.
- Are assessable through one or more indicators (papers, quizzes, projects, presentations, journals, portfolios, etc.)
- Are realistic and achievable.
- Use simple language

Examples of Effective Course Outcomes

After successful completion of the course, Students will be able to:

- Critically review the methodology of a research study published in a scholarly sociology journal.
- Design a Web site using HTML and JavaScript.
- Describe and present the contributions of women to American history.
- Recognize the works of major Renaissance artists.
- Facilitate a group to achieve agreed-upon goals.
- Determine and apply the appropriate statistical procedures to analyse the results of simple experiments.
- Develop an individual learning plan for a child with a learning disability.
- Produce a strategic plan for a small manufacturing business.
- Analyse a character’s motivation and portray that character before an audience.

- Differentiate among five major approaches to literary analysis
- List the major ethical issues one must consider when planning a human-subjects study.
- Locate and critically evaluate information on current political issues on the Web.
- List and describe the functions of the major components of the human nervous system.
- Correctly classify rock samples found in...
- Conduct a systems analysis of a group interaction.
- Demonstrate active listening skills when interviewing clients.
- Apply social psychological principles to suggest solutions to contemporary social problems.

A more detailed model for stating learning objectives requires that objectives have three parts: a *condition*, an *observable behaviour*, and a *standard*. The Table 17, provides eight examples.

Table 17: Examples for writing effective course outcomes

S.No	Learning Objective	Condition	Observable Behaviour	Standard
1	Students will be able to solve algebraic equations	Given a set of algebraic equations	Solve linear and quadratic algebraic equations	Correctly solve 90% of equations presented in the exercise
2	Students will be able to write an essay .	After reading a provided article	Write a well-organized argumentative essay	The essay must have a clear thesis, supporting arguments, and a conclusion, with minimal grammatical errors
3	Students will be able to conduct a scientific experiment.	With a laboratory kit and procedure manual	Set up and conduct an experiment	Conduct the experiment according to the procedure with no major errors, and record accurate data
4	Students will be able to use proper punctuation in writing.	Given a short story to edit	Identify and correct punctuation errors in the text	Correct all punctuation errors with 95% accuracy
5	Students will be able to use critical thinking to solve problems.	Given a complex case study	Analyse the problem and propose a solution	Provide a solution that addresses at least three key issues with logical reasoning.
6	Students will be able to present a research project.	During a class presentation	Present findings to the class using visual aids	The presentation must be clear, within 10 minutes, and answer at least 3 questions from the audience.
7	Students will be able to use a spreadsheet program.	Using a computer with spreadsheet software	Create and format a spreadsheet with formulas	The spreadsheet must include at least 3 formulas and be formatted according to provided specifications.
8	Students will be able to participate in group discussions.	In a small group setting	Contribute relevant ideas and respond to peers' comments	Contribute at least 3 relevant ideas and respond to at least 2 peers during the discussion.

The following Table 18, is the example describe a Course Outcome that is not measurable as written, an explanation for why the Course Outcome is not considered measurable, and a suggested edit that improves the Course Outcome.

Table 18: Course Outcome which is not measurable

Original Course Outcome	Evaluation of language used in this Course Outcome	Improved Course Outcome
Explore in depth the literature on an aspect of teaching strategies.	<i>Exploration is not a measurable activity but the quality of the product of exploration would be measurable with a suitable rubric.</i>	Upon completion of this course the students will be able to: write a paper based on an in-depth exploration of the literature on an aspect of teaching strategies.

Examples that are TOO general and VERY HARD to measure...

- ...will appreciate the benefits of learning a foreign language.
- ...will be able to access resources at the Institute library.
- ...will develop problem-solving skills.
- ...will have more confidence in their knowledge of the subject matter.

Examples that are still general and HARD to measure...

- ...will value knowing a second language as a communication tool.
- ...will develop and apply effective problem-solving skills that will enable one to adequately navigate through the proper resources within the institute library.
- ...will demonstrate the ability to resolve problems that occur in the field.
- ...will demonstrate critical thinking skills, such as problem solving as it relates to social issues.

Examples that are SPECIFIC and relatively EASY to measure...

- ...will be able to read and demonstrate good comprehension of text in areas of the student's interest or professional field.
- ...will demonstrate the ability to apply basic research methods in psychology, including research design, data analysis, and interpretation.
- ...will be able to identify environmental problems, evaluate problem-solving strategies, and develop science-based solutions.
- ...will demonstrate the ability to evaluate, integrate, and apply appropriate information from various sources to create cohesive, persuasive arguments, and to propose design concepts.

An Introspection - Examine Your Own Course Outcomes

1. If you have written statements of broad course goals, take a look at them. If you do not have a written list of course goals, reflect on your course and list the *four to six most important* student outcomes you want your course to produce.
2. Look over your list and check the one most important student outcome. If you could only achieve one outcome, which one would it be?
3. Look for your outcome on the list of Indicators of Attainment or outcomes society is asking us to produce. Is it there? If not, is the reason a compelling one?
4. Check each of your other "most important" outcomes against the list of outcomes. How many are on the list of key competencies?
5. Take stock. What can you learn from this exercise about what you are trying to accomplish as a teacher? How clear and how important are your statements of outcomes for your use and for your students'? Are they very specifically worded to avoid misunderstanding? Are they supporting important needs on the part of the students?

12.2 Writing Course Outcomes

One of the first steps you take in identifying the expected learning outcomes for your course is identifying the purpose of teaching the course. By clarifying and specifying the purpose of the course, you will be able to discover the main topics or themes related to students' learning. Once discovered, these themes will help you to outline the expected learning outcomes for the course. Ask yourself:

- What role does this course play within the program?
- How is the course unique or different from other courses?
- Why should/do students take this course? What essential knowledge or skills should they gain from this experience?
- What knowledge or skills from this course will students need to have mastered to perform well in future classes or jobs?
- Why is this course important for students to take?

13. CO-PO COURSE ARTICULATION MATRIX MAPPING

Course Articulation Matrix shows the educational relationship (Level of Learning achieved) between Course Outcomes and Program Outcomes for a Course. This matrix strongly indicates whether the students are able to achieve the course learning objectives. The matrix can be used for any course and is a good way to evaluate a course syllabus.

Observations:

1. The first five POs are purely of technical in nature, while the other POs are non-technical.
2. For the theory courses, while writing the COs, you need to restrict yourself between Blooms Level LD1 to Level LD 4. Again, if it is a programming course, restrict yourself between Blooms Level LD 1 to Level LD 3 but for the other courses, you can go up to Blooms Level LD 4.
3. For the laboratory courses, while composing COs, you need to restrict yourself between Blooms Level LD 1 to Level LD 5.
4. Only for main projects, you may extend up to Blooms Level 6 while composing COs.
5. For a given course, the course in-charge has to involve all the other Professors who teach that course and ask them to come up with the CO-PO mapping. The course in-charge has to take the average value of all of these CO-PO mappings and finalize the values or the course in-charge can go with what the majority of the faculty members prefer for. Ensure that none of the Professors who are handling the particular course discuss with each other while marking the CO-PO values.
6. If you want to match your COs with non-technical POs, then correlate the action verbs used in the course COs with the thumb rule given in the table and map the values. (Applies only for mapping COs to non-technical POs).

13.1 Assigning the values for mapping COs to POs/PSOs.

1. Select action verbs for a CO from different Bloom's levels based on the importance of the particular CO for the given course.
2. Stick on to single action verbs while composing COs but you may go for multiple action verbs if the need arises.
3. You need to justify for marking of the values in CO-POs / PSOs articulation matrix. Use a combination of words found in the COs, POs / PSOs and your course syllabus for writing the justification. Restrict yourself to one or two lines.
4. Values to CO-PO (technical POs in particular) matrix can be assigned by

- a. Judging the importance of the particular CO in relation to the POs / PSOs. If the CO matches strongly with a particular PO criterion, then assign 3, if it matches moderately then assign 2 or if the match is low then assign 1 else mark with “-” symbol.
- b. If an action verb used in a CO is repeated at multiple Bloom’s levels, then you need to judge which Bloom’s level is the best fit for that action verb.

13.2 Method for Articulation

1. Identify the Indicators of Attainment of POs / PSOs to each CO and make a corresponding mapping table with assigning (•) mark at the corresponding cell. One observation to be noted is that the first five POs are purely of technical in nature, while the other POs are non-technical.
2. Justify each CO – PO / PSO mapping with a justification statement and recognize the number of Indicators of Attainment (IA) features mentioned in the justification statement that are matching with the given Key Attributes for Assessing Program Outcomes. Use a combination of words found in the COs, POs // PSOs and your course syllabus for writing the justification.
3. Make a table with number of Indicators of Attainment for CO – PO/PSO mapping with reference to the maximum given Key Attributes for Assessing Program Outcomes.
4. Make a table with percentage of Indicators of Attainment for CO – PO/PSO mapping with reference to the maximum given Key Attributes for Assessing Program Outcomes.
5. Finally, Course Articulation Matrix (CO - PO / PSO Mapping) is prepared with COs and POs and COs and PSOs on the scale of 0 to 3, 0 being no correlation (marked with (“-”), 1 being the low/slight correlation, 2 being medium/moderate correlation and 3 being substantial/high correlation based on the following strategy.

0	$0 \leq C \leq 5\%$	No correlation
1	$5 < C \leq 40\%$	Low / Slight
2	$40 \% < C < 60\%$	Moderate
3	$60\% \leq C < 100\%$	Substantial / High

14. INDICATORS OF ATTAINMENT FOR ASSESSING PROGRAM OUTCOMES

Indicators of attainment of Washington accord Knowledge and skill (WKs) are measurable benchmarks used to assess whether students have achieved the desired program outcomes. These indicators focus on key areas such as knowledge acquisition, practical skills, critical thinking, and communication. It helps students to prepare for professional success by focusing on measurable competencies and skills needed in the career. The indicators of attainment of Washington accord Knowledge and skill (WKs) for POs and PSOs are shown in table 19 and table 20.

Table 19: Indicators of attainment of WKs for assessing program outcomes.

Program Outcome	Indicators of attainment (IA)	No of Indicators of Attainment
PO1	Engineering Knowledge: Apply knowledge of mathematics, natural science, computing, engineering fundamentals and an engineering specialization as specified in WK1 to WK4 respectively to develop to the solution of complex engineering problems	15
	WK 1a Applying concepts of natural sciences viz., physics, chemistry, social science, and discipline specialized engineering science	

		fundamentals for solving respective problems / applications	
	WK 2a	The use of algorithms and numerical approximation techniques in mathematical analysis as applied to engineering problems	
	WK 2b	Development of an analytical, numerical, or empirical description of a real system	
	WK 2c	The knowledge and skills required to analyse data (data awareness, cleaning, discovery, ethics, exploration, tools, and visualization) including developing an analytical plan; selecting and using appropriate statistical techniques and tools; and interpreting, evaluating, and comparing results with other findings	
	WK 2d	Ability to use statistical principles to summarize data and draw conclusions from it	
	WK 2e	Identifies all relevant constraints and requirements and formulates an accurate description of the problem	
	WK 2f	Develop the models that can be mathematical or physical in nature and are created with the specific intent of describing, analysing, testing, demonstrating, and/or predicting behaviours, properties, or other characteristics of the system	
	WK 2g	The knowledge and skills to use computer systems to store and manipulate large quantities of information	
	WK 2h	Use algorithms, computational tools, simulation and modelling techniques with data visualization for effective analysis.	
	WK 3a	Gathers engineering knowledge from the open literature and discerns the most relevant	
	WK 3b	Theoretical problem identification, model formulation and data collection	
	WK 3c	Evaluates the analysis for accuracy and validity of assumptions made.	
	WK 4a	Applying engineering specialist knowledge for evaluation and validation of the assumptions made.	
	WK 4b	Understanding of standards, innovation and critical analysis for accepted practices	
	WK 4c	Apply engineering management principles to effectively implement economic decision-making.	
PO2		Problem Analysis: Identify, formulate, review research literature and analyze complex engineering problems reaching substantiated conclusions with consideration for sustainable development. (WK1 to WK4)	15
	WK 1a	Applying concepts of natural sciences viz., physics, chemistry, social science, and discipline specialized engineering science fundamentals for solving respective problems / applications	
	WK 2a	The use of algorithms and numerical approximation techniques in mathematical analysis as applied to engineering problems	
	WK 2b	Development of an analytical, numerical, or empirical description of a real system	
	WK 2c	The knowledge and skills required to analyse data (data awareness, cleaning, discovery, ethics, exploration, tools, and visualization) including developing an analytical plan; selecting and using appropriate statistical techniques and tools; and interpreting, evaluating, and comparing results with other findings	

	WK 2d	Ability to use statistical principles to summarize data and draw conclusions from it	
	WK 2e	Identifies all relevant constraints and requirements and formulates an accurate description of the problem	
	WK 2f	Develop the models that can be mathematical or physical in nature and are created with the specific intent of describing, analysing, testing, demonstrating, and/or predicting behaviours, properties, or other characteristics of the system	
	WK 2g	The knowledge and skills to use computer systems to store and manipulate large quantities of information	
	WK 2h	Use algorithms, computational tools, simulation and modelling techniques with data visualization for effective analysis.	
	WK 3a	Gathers engineering knowledge from the open literature and discerns the most relevant	
	WK 3b	Theoretical problem identification, model formulation and data collection	
	WK 3c	Evaluates the analysis for accuracy and validity of assumptions made.	
	WK 4a	Applying engineering specialist knowledge for evaluation and validation of the assumptions made.	
	WK 4b	Understanding of standards, innovation and critical analysis for accepted practices	
	WK 4c	Apply engineering management principles to effectively implement economic decision-making.	
PO3	Development of Solutions: Design creative solutions for complex engineering problems and design/develop systems/components/processes to meet identified needs with consideration for the public health and safety, whole-life cost, net zero carbon, culture, society and environment as required. (WK5).		06
	WK 5a	Demonstrates originality in developing design solutions that incorporate social values and local considerations of sustainable development impacts.	
	WK 5b	Use of modern modelling and computational tools for system design / component design / process design for problem analysis and re-use of sources for improving efficiency / optimization.	
	WK 5c	Evaluates the feasibility of alternative solutions in all relevant contexts which, as appropriate to the problem, may include: technical, sustainability, suitability for implementation, economic, aesthetic, ethical, health and safety, societal, environmental and cultural.	
	WK 5d	Investing in projects, implementing measures, identifying and reducing major sources of emissions such as improving energy efficiency, transitioning to renewable energy, and adopting low-carbon technologies	
	WK 5e	Waste minimization and resource reuse compliance with environmental regulations and impact assessment.	
	WK 5f	Describes the preferred solution and presents the findings including technical constraints, budgetary limitations, time constraints and secondary impacts in a coherent written form and defends those findings orally.	
PO4	Conduct Investigations of Complex Problems: Conduct investigations of complex engineering problems using research-based knowledge including design of experiments, modelling, analysis & interpretation of data to		07

	provide valid conclusions. (WK8).	
	WK 8a Reviews the open research literature and identifies the needs for investigation methodologies.	
	WK 8b Understanding of appropriate codes of practice and industry standards awareness of quality issues	
	WK 8c Designs and executes valid forms of research, experimentation or measurement.	
	WK 8d Use creative ability to identify, classify and describe the performance of systems and components through the use of analytical methods and modelling techniques and including considering sources of error	
	WK 8e Ability to apply qualitative and quantitative methods for evaluating emerging complex engineering problems.	
	WK 8f Draws valid conclusions and justifies those conclusions.	
	WK 8g Calibrates / validates the data collection methods and equipment.	
PO5	Engineering Tool Usage: Create, select and apply appropriate techniques, resources and modern engineering & IT tools, including prediction and modelling recognizing their limitations to solve complex engineering problems. (WK2 and WK6)	09
	WK 2a The use of algorithms and numerical approximation techniques in mathematical analysis as applied to engineering problems	
	WK 2b Development of an analytical, numerical, or empirical description of a real system	
	WK 2c The knowledge and skills required to analyse data (data awareness, cleaning, discovery, ethics, exploration, tools, and visualization) including developing an analytical plan; selecting and using appropriate statistical techniques and tools; and interpreting, evaluating, and comparing results with other findings	
	WK 2d Ability to use statistical principles to summarize data and draw conclusions from it	
	WK 2e Identifies all relevant constraints and requirements and formulates an accurate description of the problem	
	WK 2f Develop the models that can be mathematical or physical in nature and are created with the specific intent of describing, analysing, testing, demonstrating, and/or predicting behaviours, properties, or other characteristics of the system	
	WK 2g The knowledge and skills to use computer systems to store and manipulate large quantities of information	
	WK 2h Use algorithms, computational tools, simulation and modelling techniques with data visualization for effective analysis.	
	WK 6a Identifies the range of current tools and resources available, selects one or more suitable tools and/or appropriate resources, and justifies the selection including considerations of the limitations of the tools available.	
	WK 6b Applies such tools to simulate behaviour or model outcomes that might resolve a complex engineering problem, checks the results for validity, evaluates results and recognises the limitations on those results.	
	WK 6c Integration of measurement systems for process parameters with engineering design in the practice areas.	

PO6	The Engineer and The World: Analyze and evaluate societal and environmental aspects while solving complex engineering problems for its impact on sustainability with reference to economy, health, safety, legal framework, culture and environment. (WK1, WK5, and WK7).	11
	WK 1a Applying concepts of natural sciences viz., physics, chemistry, social science, and discipline specialized engineering science fundamentals for solving respective problems / applications	
	WK 5a Demonstrates originality in developing design solutions that incorporate social values and local considerations of sustainable development impacts.	
	WK 5b Use of modern modelling and computational tools for system design / component design / process design for problem analysis and re-use of sources for improving efficiency / optimization.	
	WK 5c Evaluates the feasibility of alternative solutions in all relevant contexts which, as appropriate to the problem, may include: technical, sustainability, suitability for implementation, economic, aesthetic, ethical, health and safety, societal, environmental and cultural.	
	WK 5d Investing in projects, implementing measures, identifying and reducing major sources of emissions such as improving energy efficiency, transitioning to renewable energy, and adopting low-carbon technologies	
	WK 5e Waste minimization and resource reuse compliance with environmental regulations and impact assessment.	
	WK 5f Describes the preferred solution and presents the findings including technical constraints, budgetary limitations, time constraints and secondary impacts in a coherent written form and defends those findings orally.	
	WK 7a Identifies risks, develops and evaluates risk management strategies to minimize the likelihood of significant consequences (such as injury or loss of life, major environmental damage, or significant economic loss) occurring in unusual or unexpected circumstances.	
	WK 7b Identifies hazards and justifies relevant strategies and systems to reasonably assure public health and safety (including as appropriate to the discipline, safety in construction/fabrication, operation, maintenance, deconstruction/disposal, failing-safe and occupational health and safety).	
	WK 7c Identifies and justifies specific actions required for environmental protection in the event of failure and to address cultural or community concerns.	
	WK 7d Advanced student project work involves students developing sustainable design solutions and undertakes life-cycle analysis and ensures relevant regulations and legislations for compliance.	
PO7	Ethics: Apply ethical principles and commit to professional ethics, human values, diversity and inclusion; adhere to national & international laws. (WK9)	06
	WK 9a Demonstrates an understanding of the moral responsibilities of a professional engineer including need to self-manage in an orderly and ethical manner, to balance obligations to the interests of employers and clients, and to uphold standards in the engineering profession.	
	WK 9b Identifies and justifies ethical courses of action when confronted	

		with complex situations that might arise in the work of a professional engineer.	
	WK 9c	Identifies and justifies the use or otherwise of new technologies, such as but not limited to, Generative AI.	
	WK 9d	Evaluates the ethical dimensions of professional practice (diversity and inclusivity) and demonstrates ethical behaviour.	
	WK 9e	High degree of trust and integrity for professional obligations in an organization.	
	WK 9f	Comprehends how legislative, regulatory, contract law, other common law and professional obligations apply and manages own activities to comply.	
PO8	Individual and Collaborative Team work: Function effectively as an individual, and as a member or leader in diverse/multi-disciplinary teams <i>Adopted: WK 9</i>		06
	1	Manages own activities with honesty and integrity and in an orderly manner to meet deadlines	
	2	In group situations students are guided to develop empathy for others and to adopt inclusive behavior and language.	
	3	Contributes constructively to team decision making, earns the trust and confidence of other team members.	
	4	Students have opportunities to contribute to a diverse range of team-based settings.	
	5	Provides leadership in a team environment by making informed decisions, keeping the team motivated and accepting and delegating responsibility.	
	6	Critically evaluates the effectiveness of their individual and overall team performance.	
PO9	Communication: Communicate effectively and inclusively within the engineering community and society at large, such as being able to comprehend and write effective reports and design documentation, make effective presentations considering cultural, language, and learning differences (<i>Adopted: WK-1 & WK-9</i>)		07
	1	Applying natural sciences, concepts of physics, chemistry, social science, Engineering science fundamentals and engineering science discipline specialization addressing engineering problems / applications WK1	
	2	Presents a range of written reports and other documentation relevant to the engineering discipline that convey information effectively and respectfully to both technical and diverse audiences.	
	3	Presents work verbally in a clear, appropriate and articulate manner, using visual aids appropriately in a range of contexts.	
	4	Comprehends and responds appropriately to written and verbal instructions and appropriately instructs or briefs others in group exercises.	
	5	Produces engineering specifications or design	
	6	Documentation that satisfies the requirements of the design brief.	
	7	Critically evaluates the effectiveness and appropriateness of their own communication methods such as body language and tone of Voice	
PO10	Project Management and Finance: Apply knowledge and understanding of engineering management principles and economic decision-making and		16

	apply these to one's own work, as a member and leader in a team, and to manage projects and in multidisciplinary environments (Adopted).	
	1 Selects and justifies appropriate forms of contract for delivery of work by consultants or contractors.	
	2 Use of Engineering management principles for Economic decision-making	
	3 Selects and applies relevant systems or techniques for managing quality, reliability and risk in the context of engineering projects.	
	4 Selects and applies relevant project management techniques to the planning and execution of future work	
	5 Estimates the capital and on-going costs of engineering work	
	6 Team Leadership and Collaboration	
	7 Multidisciplinary Integration	
	8 Work Application and Adaptation	
	9 Identification of Stakeholders	
	10 Understanding Stakeholder Needs and Expectations	
	11 Involvement and Participation	
	12 Building Relationships	
	13 Feedback Mechanisms	
	14 Monitoring and Evaluation	
	15 Reporting and Accountability	
	16 Sustainability and Long-Term Engagement	
PO11	Life-Long Learning: Recognize the need for, and have the preparation and ability for i) independent and life-long learning ii) adaptability to new and emerging technologies and iii) critical thinking in the broadest context of technological change. (WK8).	13
	1 Curiosity and a desire for lifelong learning.	
	2 Self-knowledge	
	3 Growth mindset.	
	4 Reviews the open research literature.	
	5 Identifies the needs for research or investigation.	
	6 Understanding of appropriate codes of practice and industry standards awareness of quality issues	
	7 Identifies appropriate research or investigation methodologies.	
	8 Designs and executes valid forms of research, experimentation or measurement.	
	9 Use creative ability to identify, classify and describe the performance of systems and components through the use of analytical methods and modelling techniques.	
	10 Ability to apply qualitative and quantitative methods for evaluating emerging complex engineering problems	
	11 Draws valid conclusions and justifies those conclusions	
	12 Calibrates/validates the data collection methods and equipment.	
	13 Analyses the data including considering sources of error	

Table 20: Indicators of attainment of Wks for assessing program specific outcomes

PSO Number	PSO Statement / Indicators of attainment (IA)	Number of IAs
PSO 1	Focus on Ideation and research towards digital manufacturing in product development using additive manufacturing, computer numerical control (CNC) simulation and high-speed machining.	12
	WK 1a Applying concepts of natural sciences viz., physics, chemistry, social science, and discipline specialized engineering science fundamentals for solving respective problems / applications	
	WK 2a The use of algorithms and numerical approximation techniques in mathematical analysis as applied to engineering problems	
	WK 2b Development of an analytical, numerical, or empirical description of a real system	
	WK 2c The knowledge and skills required to analyse data (data awareness, cleaning, discovery, ethics, exploration, tools, and visualization) including developing an analytical plan; selecting and using appropriate statistical techniques and tools; and interpreting, evaluating, and comparing results with other findings.	
	WK 2d Ability to use statistical principles to summarize data and draw conclusions from it.	
	WK 2e Identifies all relevant constraints and requirements and formulates an accurate description of the problem.	
	WK 2f Develop the models that can be mathematical or physical in nature and are created with the specific intent of describing, analysing, testing, demonstrating, and/or predicting behaviours, properties, or other characteristics of the system.	
	WK 2g The knowledge and skills to use computer systems to store and manipulate large quantities of information.	
	WK 2h Use algorithms, computational tools, simulation and modelling techniques with data visualization for effective analysis.	
	WK 4a Applying engineering specialist knowledge for evaluation and validation of the assumptions made.	
	WK 4b Understanding of standards, innovation and critical analysis for accepted practices	
	WK 4c Apply engineering management principles to effectively implement economic decision-making.	
PSO 2	Formulate and Evaluate concepts of thermo-fluid systems to provide solutions for Inter disciplinary engineering applications.	10
	WK 4a Applying engineering specialist knowledge for evaluation and validation of the assumptions made.	
	WK 4b Understanding of standards, innovation and critical analysis for accepted practices	
	WK 4c Apply engineering management principles to effectively implement economic decision-making.	
	WK 6a Identifies the range of current tools and resources available, selects one or more suitable tools and/or appropriate resources, and justifies the selection including considerations of the limitations of the tools available.	
	WK 6b Applies such tools to simulate behaviour or model outcomes that might resolve a complex engineering problem, checks the results for validity, evaluates results and recognises the limitations on those results.	
	WK 6c Integration of measurement systems for process parameters with engineering design in the practice areas.	
	WK 7a Identifies risks, develops and evaluates risk management strategies to minimize the likelihood of significant consequences (such as injury or loss of life, major environmental damage, or significant economic loss) occurring in unusual or unexpected circumstances.	
	WK 7b Identifies hazards and justifies relevant strategies and systems to reasonably assure public health and safety (including as appropriate to the discipline, safety in construction/fabrication, operation, maintenance,	

		deconstruction/disposal, failing-safe and occupational health and safety).	
	WK 7c	Identifies and justifies specific actions required for environmental protection in the event of failure and to address cultural or community concerns.	
	WK 7d	Advanced student project work involves students developing sustainable design solutions and undertakes life-cycle analysis and ensures relevant regulations and legislations for compliance.	
PSO 3		Make use of Computational and Experimental tools for Building Career Paths towards Innovation Startups, Employability and Higher Studies.	
	WK 2a	The use of algorithms and numerical approximation techniques in mathematical analysis as applied to engineering problems	
	WK 2b	Development of an analytical, numerical, or empirical description of a real system	
	WK 2c	The knowledge and skills required to analyse data (data awareness, cleaning, discovery, ethics, exploration, tools, and visualization) including developing an analytical plan; selecting and using appropriate statistical techniques and tools; and interpreting, evaluating, and comparing results with other findings.	
	WK 2d	Ability to use statistical principles to summarize data and draw conclusions from it.	
	WK 2e	Identifies all relevant constraints and requirements and formulates an accurate description of the problem.	
	WK 2f	Develop the models that can be mathematical or physical in nature and are created with the specific intent of describing, analysing, testing, demonstrating, and/or predicting behaviours, properties, or other characteristics of the system.	
	WK 2g	The knowledge and skills to use computer systems to store and manipulate large quantities of information.	
	WK 2h	Use algorithms, computational tools, simulation and modelling techniques with data visualization for effective analysis.	
	WK 4a	Applying engineering specialist knowledge for evaluation and validation of the assumptions made.	
	WK 4b	Understanding of standards, innovation and critical analysis for accepted practices.	
	WK 4c	Apply engineering management principles to effectively implement economic decision-making.	
			11

15. ADOPTING UNITED NATION'S SUSTAINABLE DEVELOPMENT GOALS ENGINEERING PROGRAM

The Engineering Programs are vital for achieving sustainable development while addressing socio-economic issues and challenges envisaged in United Nation's Sustainable Development Goals i.e. UNSDGs are shown in Figure 4.

Concept Note on the Incorporation of UN SDGs in Curriculum

The United Nations' Sustainable Development Goals (SDGs) provide a global framework for addressing pressing societal and environmental challenges. In the context of engineering education and curriculum, integrating sustainable solutions is essential to contribute towards achieving these SDGs. This note explores how **complex engineering problem (CEP)** solving and **complex engineering activities (CEAs)** can align with specific SDGs and emphasizes the role of engineering in promoting sustainable development.

The CEP solving and CEAs play a pivotal role in developing innovative solutions that address societal challenges, fostering sustainable development. Thus, the analysis of a complex engineering problem needs to include consideration for sustainable development in the light of UN SDGs. Prospective sustainable solution resulting from a CEP-solving activity or CEA can be related to specific SDG(s).

It is pertinent to mention that is not mandatory for an HEI to map all 17 SDGs with its engineering program. Only those SDGs may be mapped which are covered in CEP solving activities, CEAs,

semester projects, open-ended labs, capstone projects or co-and-extra-curricular activities with holistic consideration for sustainable development.

The documentation or any deliverable of the activity will stand as evidence of the addressal of the respective SDG. For example, embedding renewable energy concepts, such as solar and wind power, into class / lab CEPs / CEAs and final year/ capstone projects can align them with the targets set of for SDG-7. Similarly, focusing on cutting -edge technologies like the Internet of Things (IoT) and smart grids in class / lab projects and final-year projects can work for SDG-9. By addressing CEPs / CEAs aligned with specific SDGs, engineers can contribute significantly to global efforts to build a more sustainable and equitable world.



Figure 4: United Nation’s Sustainable Development Goals (UNSDGs)

The effectiveness of the incorporation of SDG targets in class / lab projects or CEPs / CEAs can be further enhanced by encouraging the students to:

- Include Life Cycle Assessment (LCA) methods in class / lab projects or CEPs / CEAs to evaluate the environmental impact of products and systems.
- Collaborate with the students of other disciplines to address interconnected changes.
- Emphasize the use of sustainable materials and manufacturing processes in the design and production of components.
- Access the social implications of their projects, considering factors like community well-being, accessibility, and inclusivity.

16. CORRELATION MATRIX OF POS – ECS – WKS – UNSDGs

A correlation matrix has been established to link Program Outcomes (POs) with the corresponding engineering competencies, knowledge and attitude profiles, as well as the targeted UN Sustainable Development approved by NBA is shown in Table 21.

Table 21: Correlation Matrix PLOs – ECs – WKS – SDGs

POs	ECs**	WKS	SDGs (Proposed)
-----	-------	-----	-----------------

POs	ECs**	Wks	SDGs (Proposed)
PO1 Engineering Knowledge: Breadth, Depth and Type of Knowledge, both Theoretical and Practical	EC 1: Depth of knowledge required	WK-1: Natural Sciences and Awareness of Relevant Social Sciences WK-2: Mathematics and Computing WK-3: Engineering Fundamentals WK-4: Engineering Specialist Knowledge	SDG-9
PO2 Problem Analysis: Complexity of Analysis	EC 4: Range of conflicting requirements EC 2: Depth of analysis required EC 10: Interdependence	WK-1: Natural Sciences and Awareness of relevant Social Sciences WK-2: Mathematics & Computing WK-3: Engineering Fundamentals WK-4: Engineering Specialist Knowledge	Selected SDGs from SDG -1 to 17 (relevance as per curriculum)
PO3 Design / Development of Solutions: Breadth and Uniqueness of Engineering Problem i.e. the extent to which problems are original and so which solutions have not previously been identified or codified	EC 4: Range of conflicting requirements EC 5: Infrequently encountered issues EC 8: Extent of stakeholder involvement in design and development of solutions	WK-5: Engineering Design and Operations	SDG - 1, 2, 3, 6, 10, 11, 12, 13, 14 (relevance as per curriculum)
PO4 Investigation: Breadth and Depth of Investigation and Experimentation	EC 5: Infrequently encountered issues EC 7: Range of resources	WK-8: Research literature	SDG - 9
PO5 Total Usages: Level of Understanding of Appropriateness of Technologies and Tools	EC 2: Depth of analysis required EC 5: Infrequently encountered issues	WK-2: Mathematics and computing WK-6: Engineering Practices	SDG - 9

POs	ECs**	Wks	SDGs (Proposed)
PO6 The Engineer and the World: Level of Knowledge and Responsibility for Sustainable Development.	EC 6: Protection of Society EC 9: Extent of applicable Codes, Legal and Regulatory	WK-1: Natural sciences and awareness of relevant social sciences WK-5: Engineering design and operations WK 7: Engineering in Society	Selected SDGs from SDG - 1 to 17 (relevance as per curriculum)
PO7 Ethics: Understanding and Level of Practice	EC 9: Extent of applicable Codes, Legal and Regulatory	WK-9: Ethics, Inclusive behaviour and conduct	SDG - 5, 10, 16
PO8 Individual and Collaborative Team Work Role in and Diversity of Team	EC 8: Extent of stakeholder involvement in design and development of solutions	WK 9: Ethics inclusive behaviour and conduct	SDG - 5, 10, 16
PO9 Communication: Level of Communication According to Type of Activities Performed.	EC 8: Extent of stakeholder involvement in design and development of solutions	WK-1: Natural sciences and awareness of relevant social sciences WK-9: Ethics inclusive behaviour and conduct	SDG - 5, 10, 16
PO10 Project Management and Finance: Level of Management Required for Differing Types of Activity	EC 10: Interdependence EC 7: Range of resources EC 12: Judgement	WK-2: Mathematics & Computing WK-5: Engineering design and operation	SDG - 9
PO11 Lifelong Learning: Duration and Manner	EC 11: Continuing Professional Development (CPD) and lifelong hearing. EC 12: Judgement	WK-8: Research literature	SDG - 9, 13

** ECs are expected to be demonstrated by graduates during their practical experiences, which have been mapped with POs to reflect integration in the designed curriculum.

The relationship matrix has been generically designed as a guiding framework and is applicable to all engineering disciplines. When interpreting the matrix within a specific context revisions or amplifications may be incorporated to highlight particular emphasis or compliance with rationalized program requirements.

17. METHODS FOR MEASURING LEARNING OUTCOMES

There are many different ways to assess student learning. In this section, we present the different types of assessment approaches available and the different frame works to interpret the results.

1. Continuous Internal Assessment (CIA)
2. Alternate Assessment Tools (AAT)
3. Semester end examination (SEE)

4. Laboratory and project work
5. Course exit survey
6. Program exit survey
7. Alumni survey
8. Employer survey
9. Course expert committee
10. Program Assessment and Quality Improvement Committee (PAQIC)
11. Department Advisory Board (DAB)
12. Faculty meetings
13. Professional societies

The above assessment indicators are detailed below.

17.1 Continuous Internal Assessment (CIA)

Two Continuous Internal Examinations (CIEs) are conducted for all courses by the department. All students must participate in this evaluation process. These evaluations are critically reviewed by HOD and senior faculty and the essence is communicated to the faculty concerned to analyze, improve and practice so as to improve the performance of the student.

17.2 Alternate Assessment Tools (AAT)

This AAT enables faculty to design own assessment patterns during the CIA. The AAT converts the classroom into an effective learning center. The AAT may include tutorial hours/classes, seminars, assignments, term paper, open ended experiments, METE (Modeling and Experimental Tools in Engineering), five minutes video, MOOCs etc. The AAT chosen for this course is given in table.

17.3 Semester End Examination (SEE)

The semester end examination is conducted for all the courses in the department. Before the Semester end examinations course reviews are conducted, feedback taken from students and remedial measures will be taken up such that the student gets benefited before going for end exams. The positive and negative comments made by the students about the course are recorded and submitted to the Departmental Academic Council (DAC) and to the principal for taking necessary actions to better the course for subsequent semesters.

17.4 Laboratory and Project Works

The laboratory work is continuously monitored and assessed to suit the present demands of the industry. Students are advised and guided to do project works giving solutions to research / industrial problems to the extent possible by the capabilities and limitations of the student. The results of the assessment of the individual projects and laboratory work can easily be conflated in order to provide the students with periodic reviews of their overall progress and to produce terminal marks and grading.

17.5 Course Exit Surveys

Students are encouraged to fill-out a brief survey on the fulfillment of course objectives. The data is reviewed by the concerned course faculty and the results are kept open for the entire faculty. Based on this, alterations or changes to the course objectives are undertaken by thorough discussions in faculty and DAC meetings.

17.6 Program Exit Survey

The program exit questionnaire form is to be filled by all the students leaving the institution. The questionnaire is designed in such a way to gather information from the students regarding the program educational objectives, solicit about program experiences, carrier choices, as well as any suggestions and comments for the improvement of the program. The opinions expressed in exit interview forms are reviewed by the DAC for implementation purposes.

17.7 Alumni Survey

The survey asks former students of the department about the status of their employment and further education, perceptions of institutional emphasis, estimated gains in knowledge and skills, involvement

a sunder graduate student, and continuing involvement with Institute of Aeronautical Engineering. This survey is administered every three years. The data obtained will be analyzed and used in continuous improvement.

17.8 Employer Survey

The main purpose of this employer questionnaire is to know employer's views about the skills they require of employees compared to the skills actually possessed by them. The purpose e is also to identify gaps in technical and vocational skills, need for required training practices to fill these gaps and criteria for hiring new employees. These employer surveys are reviewed by the College Academic Council (CAC) to affect the present curriculum to suit the requirement so the employer.

17.9 Course Expert Committee

The course expert team is responsible in exercising the central domain of expertise in developing and renewing the curriculum and assessing its quality and effectiveness to the highest of professional standards. Inform the Academic Committee the 'day-to-day' matters as are relevant to the offered courses. This committee will consider the student and staff feedback on the efficient and effective development of the relevant courses. The committee also review the course full stack content developed by the respective course coordinator.

17.10 Program Assessment and Quality Improvement Committee (PAQIC)

PAQIC monitors the achievements of Program Outcomes (POs) and Program Educational Objectives (PEOs). It will evaluate the program effectiveness and proposes the necessary changes. It also prepares the periodic reports on program activities, progress, status or other special reports for management. It also motives the faculty and students towards attending workshops, developing projects, working models, paper publications and engaging in research activities.

17.11 Department Advisory Board (DAB)

Departmental Advisory Board plays an important role in the development of the department. Department level Advisory Board will be established for providing guidance and direction for qualitative growth of the department. The Board interacts and maintains liaison with key stakeholders. DAB will Monitor the progress of the program and develop or recommend the new or revised goals and objectives for the program. Also, the DAB will review and analyze the gaps between curriculum and Industry requirement and gives necessary feedback or advices to be taken to improve the curriculum.

17.12 Faculty Meetings

The DAC meets bi-annually for every academic year to review the strategic planning and modification of PEOs. Faculty meetings are conducted at least once in fortnight for ensuring the implementation of DAC's suggestions and guidelines. All these proceedings are recorded and kept for the availability of all faculties.

17.13 Professional Societies

The importance of professional societies like IEEE, IETE, ISTE, IE (I) etc., are explained to the students and they are encouraged to become members of the above to carry out their continuous search for knowledge. Student and faculty chapters of the above societies are constituted for a better technical and entrepreneurial environment. These professional societies promote excellence in instruction, research, public service and practice.

18. CO - ASSESSMENT PROCESSES AND TOOLS

Course outcomes are evaluated based on two approaches namely direct and indirect assessment methods. The direct assessment methods are based on the Continuous Internal Assessment (CIA) and Semester End Examination (SEE) whereas the indirect assessment methods are based on the course end survey and program exit survey provided by the students, Alumni and Employer. The weightage in CO attainment of Direct and Indirect assessments are illustrated in Table 22.

Table 22: The weightage in CO attainment of Direct and Indirect assessments

Assessment Method	Assessment Tool	Weightage in CO attainment
Direct Assessment	Continuous Internal Assessment (CIE & AAT)	80%
	Semester End Examination	
Indirect Assessment	Course End Survey	20%

18.1 Direct Assessment

Direct assessment methods are based on the student's knowledge and performance in the various assessments and examinations. These assessment methods provide evidence that a student has command over a specific course, content, or skill, or that the students work demonstrates a specific quality such as creativity, analysis, or synthesis.

The various direct assessment tools used to assess the impact of delivery of course content is listed in Table 23.

- Continuous internal examination, semester end examinations, AAT (includes assignment, 5 minutes videos, seminars etc.) are used for CO calculation.
- The attainment values are calculated for individual courses and are formulated and summed for assessing the POs.
- Performance in AAT is indicative of the student's communication skills.

Table 23: The direct assessment tools used to assess the impact of delivery of course content

S.No	Courses	Components	Frequency	Max. Marks	Evidence
1	Core / Elective	Continuous Internal Examination	Twice in a semester	20	Answer script
		Alternative Assessment Tools (AAT)	Twice in a semester	20	Course Outline Description
		Semester End Examination	Once in a semester	60	Answer script
2	Laboratory	Conduction of experiment	Once in a week	5	Work sheets
		Observation	Once in a week	5	Work sheets
		Result	Once in a week	5	Work sheets
		Record	Once in a week	5	Work sheets
		Viva	Once in a week	10	Work sheets
		Internal laboratory assessment	Once in a semester	10	Answer script
		Semester End Examination	Once in a semester	60	Answer script
3	Project Work	Presentation	Twice in a semester	40	Presentation
		Semester End Examination	Once in a semester	60	Thesis report

18.2 Indirect Assessment:

Course End Survey - In this survey, questionnaires are prepared based on the level of understanding of the course and the questions are mapped to Course Outcomes. The tools and processes used in indirect assessment are shown in Table 24.

Table 24: Tools and processes used in indirect assessment of course outcomes.

Tools	Process	Frequency
Course End Survey	<ul style="list-style-type: none"> • Taken for every course at the end of the semester • Gives an overall view that helps to assess the extent of 	Once in a semester

	coverage/ compliance of COs • Helps the faculty to improve upon the various teaching methodologies	
--	---	--

Direct Tools:

(Measurable in terms of marks and w.r.t. CO) Assessment done by faculty at department level

Indirect Tools:

(Non-measurable (Surveys) in terms of marks and w.r.t. CO) Assessment done at institute level.

19. PO ATTAINMENT USING DIRECT AND INDIRECT TOOLS

The institute has the following methods for assessing attainment of POs.

1. Direct method and Indirect method

The attainment levels of course outcomes help in computing the PO based upon the mapping done.

Table 25: The methods for assessing attainment of Program Outcomes.

	Assessment	Tools	Weight
POs Attainment	Direct Assessment	CO attainment of courses	80%
	Indirect Assessment	Program exit survey	20%
		Alumni survey	
		Employer survey	

The CO values of both theory and laboratory courses with appropriate weightage as per CO-PO mapping, as per Program Articulation Matrix are considered for calculation of direct attainment of PO.

19.1 POs Attainment

The attainment of POs/PSOs are calculated through direct and indirect assessment methods.

- Direct assessment is calculated through Continuous Internal Assessment (CIA) and Semester End Exam (SEE) and Indirect assessment through feedback form from program exit survey, employers/industry, and alumni The figure 5, represents the evaluation process of POs attainment.

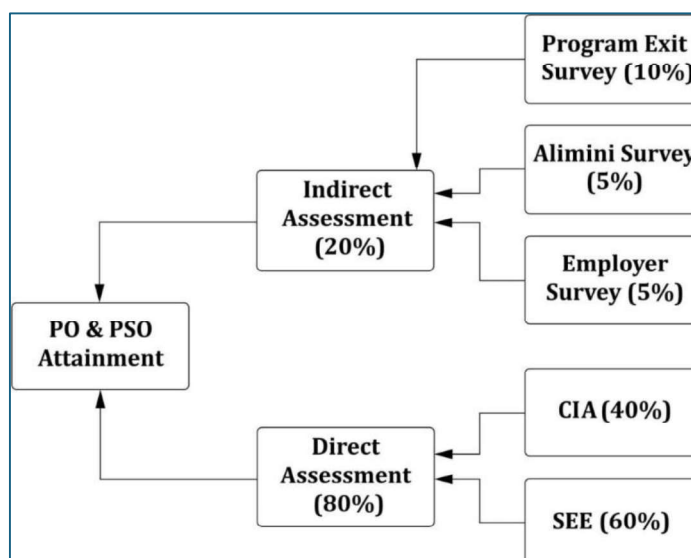


Figure 5: Evaluation Process of POs and PSOs Attainment

20. PROGRAM OUTCOMES (POs) AND PROGRAM SPECIFIC OUTCOMES(PSOs) ATTAINED THROUGH COURSE MODULES

Courses offered in Mechanical Engineering Curriculum (IARE-BT23) and POs/PSOs attained through course modules for I,II, III, IV,V and VI semesters.

Code	Subject	PO											PSO		
		1	2	3	4	5	6	7	8	9	10	11	1	2	3
B. Tech I Semester															
AHSD01	Professional Communication	✓	✓												✓
AHSD02	Matrices and Calculus	✓			✓			✓	✓						✓
AEED01	Elements of Electrical and Electronics Engineering	✓			✓			✓	✓						✓
ACSD01	Object Oriented Programming	✓	✓					✓	✓			✓		✓	✓
AHSD04	Professional Communication Laboratory	✓	✓	✓		✓					✓		✓		
AEED03	Electrical and Electronics Engineering Laboratory	✓						✓			✓	✓			✓
ACSD02	Object Oriented Programming with Java Laboratory	✓	✓	✓		✓				✓				✓	
AMED01	Engineering Workshop	✓	✓				✓					✓		✓	✓
B. Tech II Semester															

AHSD03	Engineering Chemistry	✓	✓			✓				✓		✓			✓	
AHSD07	Applied Physics	✓	✓				✓				✓				✓	✓
AHSD08	Differential Equations and Vector Calculus	✓	✓			✓										✓
AMED04	Engineering Mechanics	✓	✓						✓			✓	✓			✓
AHSD05	Engineering Chemistry Laboratory	✓	✓			✓						✓		✓		
AHSD09	Applied Physics Laboratory	✓	✓				✓					✓				✓
AMED05	Computer Aided Engineering Drawing	✓	✓			✓				✓		✓			✓	
ACSD06	Programming for Problem Solving Laboratory	✓	✓	✓		✓					✓				✓	
B. Tech III Semester																
AHSD11	Probability and Statistics	✓	✓			✓			✓			✓	✓			✓
AMED06	Solid Mechanics and Materials	✓	✓			✓				✓		✓				✓
AMED07	Engineering Thermodynamics	✓	✓				✓				✓				✓	✓
AMED08	Manufacturing Processes	✓	✓			✓										✓
ACSD08	Data Structures	✓	✓						✓			✓	✓			✓
AMED09	Solid Mechanics and Materials Laboratory	✓	✓			✓						✓		✓		
AMED10	Manufacturing Processes Laboratory	✓	✓				✓					✓				✓
ACSD11	Data Structures Laboratory	✓	✓			✓				✓		✓		✓		
B. Tech IV Semester																
AMED11	Design of Machine Elements	✓	✓													✓
AMED12	Theory of Mechanisms and Machines	✓			✓			✓	✓							✓
AMED13	Thermal Engineering Systems	✓			✓			✓	✓							✓
AMED14	Fluid Mechanics	✓	✓					✓	✓			✓		✓		✓
AMED15	Machining Processes and Metrology	✓	✓	✓		✓					✓		✓			

AMED16	Thermal and Fluids Engineering Laboratory	✓						✓			✓	✓			✓	
AMED17	Machine Drawing Laboratory	✓	✓	✓		✓				✓					✓	
AMED18	Machining Processes and Metrology Laboratory	✓	✓					✓				✓			✓	✓
B. Tech V Semester																
AMED19	Finite Element Analysis	✓	✓													✓
AMED20	Machine Design	✓				✓			✓	✓						✓
AMED21	Artificial Intelligence in Mechanical Engineering	✓				✓			✓	✓						✓
AMED22	Computer Aided Engineering	✓	✓						✓	✓			✓		✓	✓
AMED24	Additive Manufacturing Technology	✓	✓	✓		✓						✓		✓		
AMED28	Dynamics and Vibrations Laboratory	✓							✓			✓	✓			✓
AMED29	Computer Aided Engineering Laboratory	✓	✓	✓		✓					✓				✓	
B. Tech VI Semester																
AMED30	Heat Transfer	✓	✓													✓
AMED31	Computational Fluid Dynamics for Mechanical Engineering Applications	✓				✓			✓	✓						✓
AMED33	Engineering Tribology	✓				✓			✓	✓						✓
AMED38	Unconventional Machining Process	✓	✓						✓	✓			✓		✓	✓
AMED58	Introduction to Robotics	✓	✓	✓		✓						✓		✓		
AMED44	Heat Transfer Laboratory	✓							✓			✓	✓			✓
AMED45	Computational Fluid Dynamics Laboratory	✓	✓	✓		✓					✓				✓	

21. COURSE OUTLINE DESCRIPTION

SECTION 1: General Information about the Course	
Course Title	Solid Mechanics and Materials
Course Code	AMED06
Course Start	Third Semester
Course Type	Core
Regulation	IARE - BT 23
Prerequisite Courses	Engineering Mechanics (AMED04)
Department	Mechanical Engineering
Number of Credits	3 Credit hours
Academic Year	2024-25
Method(s) of Instruction	Theory and laboratory
Course Administrator	Dr. GVR Seshagiri Rao Professor of Mechanical Engineering IARE10572 gvr.seshagirirao@iare.ac.in
Course Coordinator's Name	Dr. K Ch Appa Rao Associate Professor of Mechanical Engineering IARE10639 k.chinnaapparao@iare.ac.in
Prior Learning Assessment and Recognition (PLAR)	Students interested in PLAR pathways for open learning can register one semester prior to the start of semester. Students will receive the necessary contact information one semester in advance.
Open Learning Faculty Member Information	Open Learning Faculty (OLF) is available to assist students. Students will receive the necessary contact information at the start of the course.
Course Webpage	https://akanksha.iare.ac.in/index?route=course/details&course_id=1717
Course Description	<p>This course introduces study of simple stresses, strains and principal stresses on deformable solids. It focuses on the analysis of members subjected to axial, bending, and torsional loads. In a nutshell, the course aims at developing the skill to solve engineering problems on structures. Eventually, through this course, analyze the response of various structural members under different loading conditions and design the same, satisfying the safety and serviceability conditions.</p> <p>The course includes a laboratory component featuring hands-on exercises. It emphasizes key concepts of strength of materials, focusing on understanding the mechanical properties of various solid engineering materials.</p>
Course Objectives	<p>The students will try to learn:</p> <ol style="list-style-type: none"> The fundamental concepts of stress, strain, and material behaviour under different loading conditions. How to calculate stresses, strains, and deformations in structural elements such as beams, shafts, and columns. To design components for strength and safety by applying failure theories and considering factors of safety. To solve practical engineering problems by analyzing material performance and predicting structural behaviour.
Text and Reference Books	<p>Text Books</p> <ol style="list-style-type: none"> R. K. Bansal, "A Textbook of Strength of Materials", Laxmi publications Pvt. Ltd., New Delhi, 2nd Edition, 2007. F. Beer, E. R. Johnston, J. DeWolf, "Mechanics of Materials", Tata McGraw-Hill Publishing Company Ltd., New Delhi, India, 1st Edition, 2008. S. S. Bhavikatti, "Strength of Materials", Vikas Publishing House Pvt. Ltd., New Delhi, 5th Edition, 2013. <p>Reference Books</p> <ol style="list-style-type: none"> B. C. Punmia, Ashok K Jain and Arun K Jain, "Mechanics of Materials", Laxmi Publications Pvt. Ltd., New Delhi, 12th Edition, 2007. R. Subramanian, "Strength of Materials", Oxford University Press, 2nd Edition, 2010. Hibbeler, R. C., "Mechanics of Materials", East Rutherford, NJ: Pearson Prentice

	Hall, 6 th Edition, 2004.
Learning Resources	<p>Course full stack is made available in IARE learning management portal – Akansha, which includes lecture notes, tutorial question bank, definition and terminology, tech-talk topics, assignments, Model question papers (2 sets), complex engineering problem solving statements, power point presentations (PPTs) and ELRV lecture recordings at:</p> <ul style="list-style-type: none"> https://www.youtube.com/watch?v=wI94gZIEEyg&list=PLzkMouYverAKguD3QNCfBNNmPcyb7BOLr
Supplemental Materials	<p>Readings, Videos, and Links</p> <ol style="list-style-type: none"> http://www.freeengineeringbooks.com/Civil/Strength-of-Material-Books.php http://royalmechanicalbuzz.blogspot.in/2015/04/strength-of-materials-book-by-r-k-bansal.html https://books.google.co.in/books?id=I8gg0Q4OQ4C-printsec=frontcoverdq=STRENGTH+OF+MATERIALShl=en-sa=Xved=0ahUKEwipveCD44HgAhWBad4KHacUAgYQ6AEIMDAB=onepageq=STRENGTH
Learning and Teaching Strategies	<p>Online material will provide the foundation of the learning resources, requiring the students to log in and engage regularly throughout the sixteen weeks of the course.</p> <p>There will be a mix of suggested readings, discussions and video content containing embedded digital content and undertake the assessment tasks.</p>

SECTION 2: Teaching Learning Scheme

At least 48 lecture hours of scheduled teaching and learning activities (TLA) will be delivered in person, with the remaining hours for scheduled and self-scheduled teaching and learning activities delivered either in person or online.
 Notional Study Time: 90 Hours (Lecture hours: 48, Tutorial hours: 8, Guided independent study hours: 10, Homework / Programming assignment hours: 9, Course project / Preparation for complex problem-solving hours: 15)

TLA Code	Teaching and Learning Activities	Number	Duration (Hours)	Total Workload
TLA 1	Lectures	48	01	48
TLA 2	Tutorials	08	01	08
TLA 3	Case Study			
TLA 4	Problem Solving			
TLA 5	Demonstration			
TLA 6	Scheduled revision sessions			
TLA 7	Guided independent study: Directed viewing of video materials / PPTs			10
TLA 8	Independent private study			
TLA 9	Laboratory Exercises			
TLA 10	Homework assignments / Programming assignments			9
TLA 11	Placement / work based learning or Specific practical training			
TLA 12	Presentation / Seminar Preparation			
TLA 13	Course Project / Preparation for Complex Problem Solving			15
TLA 14	Technical visit			
TLA 15	Field activities			
Total study hours				90
Expected total study hours				90

SECTION 3A: Course Outcomes

After successfully completing this course, the student will be able to:

Outcome Number	Course Outcomes	Learning Domain
CO1	Explain the concepts of stress, strain, and their relationships for understanding the behaviour of simple and composite bars subjected to uniaxial and biaxial stresses.	Understand
CO2	Analyse the beams to know shear force and bending moments subjected to different loads using various methods.	Analyse
CO3	Apply the theory of simple bending to beams for computing the flexural stresses across the section.	Apply
CO4	Apply the concepts of shear stresses in beams for calculating shear stresses across the section.	Apply
CO5	Develop the differential equation for elastic curve for finding slopes and deflections of determinate beams.	Understand
CO6	Illustrate the concepts of principal stresses and theories of failure for finding internal stresses and causes of failure in the structural design.	Apply

SECTION 3B: Cognitive Levels

Blooms Taxonomy Level	Cognitive Level in Percentage (%)
Remember	0
Understand	40
Apply	50
Analyse	10
Evaluate	0
Create	0

SECTION 4: Content and Context of Strength of Materials

CO1	Explain the concepts of stress, strain, and their relationships for understanding the behaviour of simple and composite bars subjected to uniaxial and biaxial stresses.
	<p>Understanding the concepts of stress, strain, and strain energy, along with the elastic properties of materials, is fundamental to predicting and analyzing the behavior of materials under various loading conditions.</p> <ol style="list-style-type: none"> Foundation of Material Behavior: Stress and strain are the primary parameters used to describe how materials respond to forces. These concepts help evaluate the material's ability to withstand loads without failure. Elastic Properties: Elastic constants like young's modulus, Poisson's ratio, and shear modulus are essential for understanding how materials deform and return to their original shape, aiding in predicting their elastic limits. Strain Energy: Strain energy concepts allow engineers to analyze energy absorption and storage in materials under loading, critical for designing safe and efficient components. Application to Simple and Composite Bars: The study of simple and composite bars subjected to uniaxial and biaxial stresses provides insights into how different materials behave when combined, which is key in modern engineering applications such as layered or reinforced structures. <p>By summarizing these concepts, students gain the analytical tools to assess and design components for strength and reliability in practical engineering scenarios.</p>
CO2	Analyse the beams to know shear force and bending moments subjected to different loads using various methods.
	<p>Explaining the relationship between bending moment, shear force, and the rate of loading is crucial for understanding how structural members respond to external loads.</p> <ol style="list-style-type: none"> Core Structural Analysis: Bending moment and shear force are fundamental quantities in structural analysis, directly influencing the design and safety of beams, girders, and other members. Their relationship provides a clear picture of internal forces within the structure. Understanding Load Effects: The rate of loading determines how external forces are distributed across a member, affecting the shear force and bending moment at different points. This relationship helps predict the response of the structure to different load conditions, such as uniform

	<p>or concentrated loads.</p> <ol style="list-style-type: none"> Design and Safety Evaluation: By analyzing the bending moment and shear force diagrams, engineers can identify critical points in a structure, such as maximum stress locations, ensuring proper design for strength and stability. Behavioral Insights: Understanding the interdependence of bending moment, shear force, and loading helps explain how materials deform under load, enabling optimized material use and preventing failures like buckling or fracture. <p>This knowledge equips engineers with the tools to design safe and efficient structural components in industries like construction, transportation, and manufacturing.</p>
CO3	Apply the theory of simple bending to beams for computing the flexural stresses across the section.
	<p>Applying the theory of simple bending to beams is essential for accurately computing flexural stresses across a beam's cross-section.</p> <ol style="list-style-type: none"> Understanding Stress Distribution: The theory of simple bending explains how bending moments induce compressive and tensile stresses across a beam's cross-section, with maximum stresses at the extreme fibers and zero stress at the neutral axis. Ensuring Structural Safety: Flexural stress calculations ensure that the beam can withstand applied loads without exceeding the material's elastic limit or ultimate strength, preventing failures like cracking or fracture. Optimizing Beam Design: By analyzing the flexural stress distribution, engineers can design beams with appropriate dimensions and material properties to achieve an efficient balance of strength and material usage. Application to Various Cross-Sections: The theory allows for flexural stress analysis in beams with diverse cross-sectional shapes (e.g., rectangular, circular, or I-beams), enabling their use in a wide range of structural applications. Real-World Relevance: Flexural stress computation is critical for designing safe and durable components in buildings, bridges, and machines, ensuring they meet both strength and serviceability requirements. <p>This foundational theory equips engineers to analyze and design beams effectively, enhancing the reliability of structures.</p>
CO4	Apply the concepts of shear stresses in beams for calculating shear stresses across the section.
	<p>Applying the concepts of shear stresses in beams is essential for calculating the shear stress distribution across a beam's cross-section.</p> <ol style="list-style-type: none"> Understanding Internal Forces: Shear stress arises due to transverse loads on a beam, and its distribution varies across the section. Analyzing this helps in understanding how internal forces are resisted by the material. Critical for Structural Safety: Accurate calculation of shear stress ensures that beams are designed to prevent shear failure, which is a common mode of failure in beams subjected to heavy loads. Realistic Stress Distribution: Unlike bending stress, shear stress is not uniform across the cross-section. Understanding its parabolic distribution in rectangular or circular sections is crucial for precise structural analysis. Design of Reinforcements: In reinforced concrete and other composite beams, shear stress calculations guide the placement and amount of shear reinforcement (e.g., stirrups), ensuring the beam can handle the applied loads. Efficient Material Utilization: Knowing the shear stress distribution helps engineers optimize material usage, designing beams that balance safety and cost without over-reinforcing or underutilizing materials. <p>These calculations play a pivotal role in ensuring the strength, durability, and efficiency of beam designs in real-world engineering projects.</p>
CO5	Develop the differential equation for elastic curve for finding slopes and deflections of determinate beams.
	<p>Developing the differential equation for the elastic curve is crucial for calculating slopes and deflections in determinate beams, as it provides a systematic approach to analyzing beam deformation under loads.</p> <ol style="list-style-type: none"> Foundation of Beam Analysis: The elastic curve equation relates the bending moment, flexural rigidity (EI), and deflection of a beam. It forms the basis for understanding how beams deform under various loading conditions.

	<p>2. Determination of Slopes and Deflections: Using the differential equation, engineers can calculate the slope (angular displacement) and deflection (vertical displacement) at any point along a beam, which are critical for structural stability and performance.</p> <p>3. Design for Serviceability: Excessive deflection or slope can compromise the usability and safety of a structure. This analysis ensures that beams meet serviceability limits, maintaining functionality and user comfort.</p> <p>4. Validation of Structural Integrity: The elastic curve equation allows the prediction of beam behavior under known loads, providing a reliable method to ensure structural integrity and compliance with design standards.</p> <p>This approach equips engineers with the tools to analyze and optimize beam designs for efficiency and reliability in real-world applications.</p>
CO6	Illustrate the concepts of principal stresses and theories of failure for finding internal stresses and causes of failure in the structural design.
	<p>Illustrating the concepts of principal stresses, strains and theories of failure is vital for analyzing internal stresses and identifying causes of failure in structural design.</p> <ol style="list-style-type: none"> Comprehensive Stress Analysis: Principal stresses provide a detailed understanding of maximum and minimum normal stresses acting at a point, enabling accurate prediction of material behavior under complex loading conditions. Prediction of Failure Modes: Theories of failure (e.g., Maximum Stress, Tresca, Von Mises) identify critical conditions under which materials will fail. This ensures structural components are designed to withstand real-world loads. Structural Safety and Reliability: By combining principal stress analysis and failure theories, engineers can identify failure-prone areas and implement design modifications to ensure safety and reliability. Material-Specific Design: Different materials exhibit varying failure mechanisms. These concepts help tailor designs for specific materials, ensuring compatibility and efficient performance under given loading conditions. Optimization of Structural Design: Accurate calculation of internal stresses and failure prediction allows for optimized use of materials, reducing costs while maintaining strength and durability. <p>These principles are indispensable in structural and mechanical engineering, ensuring that designs meet both safety and performance standards.</p>

SECTION 5: Complex Engineering Problem Solving

Complex engineering problem solving projects

There is one piece of assessed coursework, involving a mixture of theoretical work and practical work. We encourage to use the laboratory for practical purpose. For the calculation part in the project, they have to develop the programme code in java or python.

Programming part is mandatory for this course. Homework assignments will concentrate on theoretical concepts and techniques. Projects will be full scale to calculate the slopes and deflections of the various structural members discussed in class. All projects are individual assignments. Student are required to complete the tasks during the class period with no assistance.

Analysis of simple indeterminate structures: The entire course is dealt with analysis of determinate structures. Indeterminate structures are encountered in real life, so introduction of indeterminate structures will be discussed in the class.

SECTION 6A: Assessment Methods – Direct


Item	Evaluation Components	Week in / out	Marks
AAT: 1 - 1	Tech-Talk	Week – 2 / 5	05
AAT: 1 - 2	Assignments	Week – 4 / 7	05
AAT: 2 - 1	Complex Engineering Problem Solving	Week – 9 / 12	05
AAT: 2 - 2	Definitions and Terminology	Week – 12 / 15	05

CIE - 1	2 hours - Answer 4 out of 5 questions	Week - 9	10
CIE - 2	2 hours - Answer 4 out of 5 questions	Week - 17	10
SEE	3 hours - Answer 1 from each module	Week - 18	60
Total Marks			100
Department's Late Submission Policy:			
1. 1 – 24 hours: 25% of the mark will be deducted			
2. > 24 hours: Not accepted			
SECTION 6B: Assessment Methods –Indirect			
Course End Survey (End Semester OBE Feedback)			✓

SECTION 7: Engineering Competencies (ECs) Focused			
Please tick (✓) relevant engineering competency profile covered			
EC Number	Attributes	Profiles	(✓)
EC1	Depth of knowledge required (CP)	Ensures that all aspects of an engineering activity are soundly based on fundamental principles - by diagnosing, and taking appropriate action with data, calculations, results, proposals, processes, practices, and documented information that may be ill-founded, illogical, erroneous, unreliable or unrealistic requirements applicable to the engineering discipline	✓
EC2	Depth of analysis required (CP)	Have no obvious solution and require abstract thinking, originality in analysis to formulate suitable models.	✓
EC3	Design and development of solutions (CA)	Support sustainable development solutions by ensuring functional requirements, minimize environmental impact and optimize resource utilization throughout the life cycle, while balancing performance and cost effectiveness.	✓
EC4	Range of conflicting requirements (CP)	Competently addresses complex engineering problems which involve uncertainty, ambiguity, imprecise information and wide-ranging or conflicting technical, engineering and other issues.	-
EC5	Infrequently encountered issues (CP)	Conceptualizes alternative engineering approaches and evaluates potential outcomes against appropriate criteria to justify an optimal solution choice.	-
EC6	Protection of society (CA)	Identifies, quantifies, mitigates and manages technical, health, environmental, safety, economic and other contextual risks associated to seek achievable sustainable outcomes with engineering application in the designated engineering discipline.	-
EC7	Range of resources (CA)	Involve the coordination of diverse resources (and for this purpose, resources include people, money, equipment, materials, information and technologies) in the timely delivery of outcomes	-
EC8	Extent of stakeholder involvement (CP)	Design and develop solution to complex engineering problem considering a very perspective and taking account of stakeholder views with widely varying needs.	-
EC9	Extent of applicable codes, legal and regulatory (CP)	Meet all level, legal, regulatory, relevant standards and codes of practice, protect public health and safety in the course of all engineering activities.	-
EC10	Interdependence (CP)	High level problems including many component parts or sub-problems, partitions problems, processes or systems into manageable elements for the purposes of analysis, modelling or design and then re-combines to form a whole, with the integrity and performance of the overall system as the top consideration.	-
EC11	Continuing professional development (CPD) and lifelong	Undertake CPD activities to maintain and extend competences and enhance the ability to adapt to emerging technologies and the ever-changing nature of work.	-

	learning (CA)		
EC12	Judgement (CA)	Recognize complexity and assess alternatives in light of competing requirements and incomplete knowledge. Require judgement in decision making in the course of all complex engineering activities.	-

SECTION 8: Employability Skills			
Example: Communication skills / Programming skills / Project based skills			
Studying strength of materials equips the students with a range of employability skills that are highly valued in industries.			
Employability Skills:			
<ul style="list-style-type: none"> • Proficient in analyzing material behaviour under various loading conditions. • Expertise in stress, strain, deformation calculations, and failure theories. • Ability to identify, analyze, and solve engineering problems related to structural integrity and material performance. • Skills to design safe, efficient, and reliable components and structures, considering factors of safety and optimization. • Experience in conducting material tests (e.g., tensile, compression, and impact tests) and interpreting experimental data. • Familiarity with engineering tools and software for modelling, analysis, and simulation of material behavior. 			
Project Management:			
<ul style="list-style-type: none"> • Ability to outline project goals, timelines, and deliverables for engineering designs and analyses. • Experience working in multidisciplinary teams to solve engineering problems or complete lab-based projects. • Skills to select appropriate materials and optimize their usage in projects to ensure cost-effectiveness and sustainability. • Understanding structural failures and material limitations to make informed, data-driven decisions in project design and implementation. • Proficiency in preparing technical reports, presenting results, and effectively communicating project outcomes to stakeholders. 			

SECTION 9: Relevance to Sustainability goals			
Brief description about the course and its correlation with Sustainability Development Goal (SDGs).			
SDG Goals		Correlation with SDG	
4		Quality Education: This course provides high-quality technical education and equips students with essential skills to analyze and design safe, efficient, and sustainable materials and structures.	

CO6	73	73	-	-	-	-	-	-	-	-	-	69	54	-
-----	----	----	---	---	---	---	---	---	---	---	---	----	----	---

SECTION 10C: Course Articulation Matrix of COs to POs

0 No Contribution (0-5%)		1 Low (≥ 5 - <40%)					2 Moderate (≥ 40 - <60%)					3 High ($\geq 60\%$)		
Course Outcomes	Program Outcomes (POs)											Program Specific Outcomes (PSOs)		
	1	2	3	4	5	6	7	8	9	10	11	1	2	3
CO1	3	3	-	-	-	-	-	-	-	-	-	3	-	-
CO2	3	3	3	-	3	-	-	-	-	-	3	3	-	-
CO3	3	3	3	-	3	-	-	-	-	-	3	3	-	-
CO4	3	3	3	-	3	-	-	-	-	-	3	3	-	-
CO5	3	3	3	-	3	-	-	-	-	-	3	3	-	-
CO6	3	3	-	-	-	-	-	-	-	-	-	3	2	-
Total	18	18	12	-	12	-	-	-	-	-	12	12	2	-
Average	3	3	3		3						3	3	2	

SECTION 10D: Level of Contribution of the COs to POs and PSOs

Number	Programme Outcomes	Proficiency Assessed by	Contribution Level (from 1 to 3)
PO 1	Apply knowledge of mathematics, natural science, computing, engineering fundamentals and an engineering specialization as specified in WK1 to WK4 respectively to develop to the solution of complex engineering problems .	CIE / SEE / AAT:1 – 2 Assignments / Open-ended problems	3
PO 2	Identify, formulate, review research literature and analyse complex engineering problems reaching substantiated conclusions with consideration for sustainable development. (WK1 to WK4).	CIE / SEE / AAT:1 – 2	3
PO 3	Design creative solutions for complex engineering problems and design / develop systems / components/ processes to meet identified needs with consideration for the public health and safety, whole-life cost, net zero carbon, culture, society and environment as required. (WK5)	CIE / SEE / AAT:2 – 1 Complex Engineering Problem Solving	3
PO 5	Create, select and apply appropriate techniques, resources and modern engineering & IT tools, including prediction and modelling recognizing their limitations to solve complex engineering problems . (WK2 and WK6).	CIE / SEE / AAT:2 – 2	3
PSO 1	Design and supervise sub-structures and super structures for residential and public buildings, industrial structures, irrigation structures, power houses, highways, railways, airways, docs and harbours.	AAT: 1 – 1 Tech-Talk	3
PSO 2	Focus on Improving Performance of Structures with reference to Safety, Serviceability and Sustainable Green Building Technology.	AAT: 2 – 1 Complex Engineering Problem Solving	2

SECTION 11: Course Content

MODULE - I	SIMPLE STRESSES AND STRAINS
	Concept of stress and strain, types of stresses and strains, Hooke's law, stress - strain

	diagram for mild steel, elasticity and plasticity, working stress, factor of safety, elastic moduli and the relationship between them; Bars of varying section, composite bars, temperature stresses. Strain energy – Resilience, Gradual, sudden, impact loadings and simple applications.
MODULE - II	SHEAR FORCE AND BENDING MOMENTS
	Introduction, Types of supports and beams, Sign convention for SF and BM, Shear Force and Bending Moment diagrams. BM and SF diagrams for cantilevers and simply supported beams with and without overhangs. Calculation of maximum BM and SF and the point of contraflexure under concentrated loads, uniformly distributed loads over the whole span or part of span, combination of loads, uniformly varying load and couples.
MODULE - III	BENDING AND SHEAR STRESSES IN BEAMS
	BENDING STRESS: Assumptions in the theory of simple bending, derivation of bending equation, Neutral axis, determination bending stresses, section modulus of rectangular and circular sections (Solid and Hollow), I, T, Angle and Channel sections, design of simple beam. SHEAR STRESS: Derivation of formula – Shear stress distribution in rectangular, triangular, circular, I and T sections.
MODULE - IV	DEFLECTIONS OF BEAMS
	DEFLECTION OF BEAMS: Slope, deflection and radius of curvature – Differential equation for the elastic line of a beam – Double integration and Macaulay’s methods – Determination of slope and deflection for cantilever and simply supported beams subjected to point loads, U.D.L, uniformly varying load and couple -Mohr’s theorems – Moment area method – Application to simple cases. CONJUGATE BEAM METHOD: Introduction – Concept of conjugate beam method - Difference between a real beam and a conjugate beam - Deflections of determinate beams with constant and different moments of inertia.
MODULE - V	PRINCIPAL STRESSES AND STRAINS AND THEORIES OF FAILURES
	PRINCIPAL STRESSES AND STRAINS: Introduction, stresses on an inclined section of a bar under axial loading, compound stresses, normal and tangential stresses on an inclined plane for biaxial stresses, two perpendicular normal stresses accompanied by a state of simple shear, Mohr’s circle of stresses, principal stresses and strains, introduction to analytical and graphical solutions. THEORIES OF FAILURES: Various theories of failures like Maximum principal stress theory, maximum principal strain theory, maximum shear stress theory, maximum strain energy theory and maximum shear strain energy theory.

SECTION 12: Tentative Schedule of Instructions		
Week Number	Topics	Duration (Hours)
1	1.1 Concept of stress and strain 1.2 Types of stresses and strains 1.3 Hooke’s law, stress - strain diagram for mild steel	3
2	2.1 Elasticity and plasticity 2.2 Working stress, factor of safety 2.3 Elastic moduli and the relationship between them	3
3	3.1 Bars of varying section 3.2 Temperature stresses 3.3 Strain energy – Resilience, Gradual, sudden, impact loading	3
4	4.1 Types of supports and beams 4.2 Sign convention for SF and BM 4.3 Shear Force and Bending Moment diagrams	3
5	5.1 BM and SF diagrams for cantilever beams	3

	5.2 BM and SF diagrams for simply supported beams 5.3 BM and SF diagrams for overhanging beams	
6	6.1 Maximum BM and SF and the point of contraflexure under concentrated loads 6.2 Point of contraflexure under UDL and combination of loads 6.3 Point of contraflexure under UVL and couple	3
7	7.1 Assumptions in the theory of simple bending 7.2 Derivation of bending equation 7.3 Neutral axis, determination bending stresses	3
8	8.1 Section modulus of rectangular, circular and I sections 8.2 Section modulus of T, angle and channel sections 8.3 Design of simple beam	3
CONTINUOUS INTERNAL EXAMINATION (CIE- I)		
9	9.1 Derivation of formula for shear stress 9.2 Shear stress distribution in rectangular, triangular and circular sections 9.3 Shear stress distribution in I and T sections	3
10	10.1 Introduction to slope, deflection and radius of curvature 10.2 Differential equation for the elastic line of a beam 10.3 Double integration method	3
11	11.1 Determination of slope and deflection for cantilever beams with different loading conditions 11.2 Determination of slope and deflection for simply supported beams with different loading conditions 11.3 Macaulay's method	3
12	12.1 Determination of slope and deflection for cantilever beams with different loading conditions 12.2 Determination of slope and deflection for simply supported beams with different loading conditions 12.3 Mohr's theorem and Moment area method and applications	3
13	13.1 Concept of conjugate beam method 13.2 Difference between a real beam and a conjugate beam 13.3 Deflections of determinate beams	3
14	14.1 Stresses on an inclined section of a bar under axial loading 14.2 Normal and tangential stresses on an inclined plane for biaxial stresses 14.3 Two perpendicular normal stresses accompanied by a state of simple shear	3
15	15.1 Mohr's circle of stresses 15.2 Principal stresses and strains 15.3 Introduction to analytical and graphical solutions	3
16	16.1 Various theories of failures like Maximum principal stress theory 16.2 Maximum principal strain theory, maximum shear stress theory 16.3 Maximum strain energy theory and maximum shear strain energy theory	3
Total		48

SECTION 13: Specific Goals for the Course

The following table shows the knowledge and skills covered by the unit outcomes:

Knowledge	Skills
<p>Learners should understand:</p> <ul style="list-style-type: none"> • concepts of normal stress, shear stress, and strain • Apply Hooke's Law and understand the relationship between stress and strain for different materials • deformation under axial loads • shear force and bending moment diagrams for beams under various loading conditions • flexural formula to calculate bending stresses • concept of section modulus and its role in beam design • shear stress distribution across beam cross-sections 	<p>Learners can:</p> <ul style="list-style-type: none"> • Evaluate the stress-strain characteristics of materials under various loading conditions • Determine material properties like modulus of elasticity, yield strength, and ultimate strength • Calculate internal forces like axial force, shear force, and bending moment • Construct and interpret shear force and bending moment diagrams for beams • Analyze the effects of combined axial, torsional, and bending loads

<ul style="list-style-type: none"> • combined effects of axial, bending, and torsional loads • slopes and deflections in beams using different methods • beam deflection limits and their impact on structural design • concepts of ductility, brittleness, toughness, and resilience • failure analysis using theories of failure 	<ul style="list-style-type: none"> • Apply flexural formulas to calculate bending stresses in beams • Determine shear stress distribution across different beam cross-sections, such as rectangular, I-sections, and circular sections • Determine principal stresses and maximum shear stresses using analytical and graphical methods • Predict beam deflections and slopes under various loading and support conditions using mathematical methods • Analyze and calculate thermal stresses and strains in members subjected to temperature changes • Apply energy methods like strain energy to solve statically determinate structures. • Analyze and predict material failure using various failure criteria, including theories of strength and fracture mechanics • Design beams, shafts, and columns to withstand specified loads and moments • Ensure components meet safety and performance criteria, including factors of safety and allowable deflection • Select appropriate materials for different engineering applications based on mechanical properties • Assess deflection limits for functional and aesthetic requirements
---	--

Administrative Information

SECTION 15: History of changes		
Regulations	Description of change	BOS Date
R 16	From R15 JNTUH, Hyderabad to R16 IARE regulations <ul style="list-style-type: none"> • Principal stresses and strains and theories of failure are merged into unit 1 • Torsion of circular shafts introduced as unit 4 and columns and struts: buckling as unit 5. 	15.12.2016
R 18	Changes from R16 to R18 regulation <ul style="list-style-type: none"> • Module 5: Thin cylinders and spheres are introduced in the place of columns and struts 	10.07.2018
UG 20	Changes from R18 to UG 20 regulation <ul style="list-style-type: none"> • Principal stresses and strains; theories of failures are made separate module. • Torsion of circular shafts and springs are introduced as module 4 	17.11.2020
BT 23	Incorporated the following additions in BT 23 regulations <ul style="list-style-type: none"> • Deflection of beams using double integration, Macaulay's and conjugate beam method introduced as module 4 	21.08.2023

Course Outline Approvals	
Course Coordinator Name: Signature: Date:	Head of the Department Name: Signature: Date:
Course Outline Approvals: The course outline description approved by Outcome Based Teaching Learning (OBTL) committee on <i>date</i> in meetings <i>IARE - OBTL – COD /104/25</i>	

Dean of Outcome Based Teaching and Learning Name: Signature: Date:	Dean of Academics Name: Signature: Date:
--	--

Check List		
Section	Description	Please tick (✓)
1	General Information about the Course	
2	Notional Study Time	
3	A. Course Outcomes	
	B. Cognitive Levels	
4	Content and Context of the Course	
5	Complex Engineering Problem Solving	
6	A. Assessment Methods – Direct	
	B. Assessment Methods – Indirect	
7	Content Delivery / Instructional Methodologies	
8	Engineering Competencies (ECs) Focused	
9	Employability Skills	
10	Relevance to Sustainability goals	
11	A. Mapping between COs and POs / PSOs	
	B. Indicators of Attainment with COs to POs and PSOs	
	C. Course Articulation Matrix of COs to POs	
	D. Level of Contribution of the COs to POs and PSOs	
12	Syllabus	
13	Tentative Schedule of Instructions	
14	Specific Goals for the Course	
15	History of Changes	